



Power Analysis Software for Windows

PAS

Getting Started

© SATEC Ltd.
BG0337 Rev. A2

Every effort has been made to ensure that the material herein is complete and accurate. However, the manufacturer is not responsible for any mistakes in printing or faulty instructions contained in this book. Notification of any errors or misprints will be received with appreciation.

For further information regarding a particular Software, contact the manufacturer or your local representative or distributor.

Table of Contents

Chapter 1 Introduction	5
1.1.1 Installation	5
1.1.2 File Format	5
1.1.3 Data Retrieving from the Meters	5
1.1.4 Embedded Communication Test	5
1.1.5 General Note	5
Chapter 2 Communicating with Your Meters	6
2.1 Creating a New Site	6
2.2 Setting up Communications	7
2.2.1 Communicating through a Serial Port	7
2.2.2 Communicating through a Modem	8
2.2.3 Communicating through Internet	9
2.2.4 Communicating through a CELLULAR Modem	9
2.2.5 Communicating through a USB	9
Chapter 3 Setting Up the Device	10
3.1 Creating Setups for your Meters Off-Line	10
3.2 Downloading Setups to Your Meters	10
3.3 Uploading Setups from Your Meters	10
Chapter 4 Device Control	11
4.1 Authorization	11
4.2 Remote Relay Control	11
4.3 Device Event Flags	12
4.4 Viewing and Clearing Device Diagnostics	12
4.5 Updating the Clock	13
4.6 Resetting Accumulators and Clearing Log Files	13
4.7 Upgrading Meter Firmware	14
Chapter 5 Monitoring Your Meters	16
5.1 Viewing Real-time Data	16
5.1.1 Organizing Data Sets	16
5.1.2 Polling Devices	16
5.1.3 Viewing a Data Table	17
5.1.4 Viewing Data Trend	18
5.1.5 Saving Data to a File	19
5.1.6 Printing Data	19
5.1.7 Copying Data	19
5.1.8 Real-time Data Logging	19
5.2 Viewing Real-time Min/Max Log	19
5.3 Viewing Real-time Waveforms	20
Chapter 6 Retrieving Recording Files	21
6.1 Uploading Files on Demand	21
6.2 Using the Upload Scheduler	22
6.2.1 Setting Up the Upload Scheduler	22
6.2.2 Suspending the Scheduler	23
6.2.3 Running the Scheduler on Demand	23
6.2.4 Reviewing Upload Problems	23
6.3 Retrieving EN50160 Statistics Files	23
6.3.1 Using the Upload Scheduler	23
6.3.2 Retrieving EN50160 Statistics Files on Demand	23

6.3.3	Retrieving the EN50160 Online Statistics.....	23
6.4	Viewing Historical Data On-line	24
Chapter 7 Viewing Log Files.....		25
7.1	General Operations	25
7.1.1	Opening a Log File.....	25
7.1.2	Copying Data.....	25
7.1.3	Saving Data to a File	25
7.1.4	Printing Reports	25
7.1.5	Customizing Views	25
7.2	Viewing the Event Log	26
7.2.1	Selecting Primary and Secondary Units.....	26
7.2.2	Filtering and Sorting Events.....	26
7.2.3	Linking to Waveforms and Data Records.....	26
7.3	Viewing the Power Quality Event Log	27
7.3.1	Selecting Primary and Secondary Units.....	27
7.3.2	Filtering and Sorting Events.....	27
7.3.3	Linking to Waveforms and Data Records.....	28
7.3.4	Retrieving Waveforms Online.....	28
7.3.5	Viewing the ITI (CBEMA) Curve	28
7.4	Viewing EN50160 Compliance Report and Online statistics report	29
7.5	Viewing the Data Log	30
7.5.1	Viewing Data Trend	31
7.5.2	Selecting Channels.....	31
7.5.3	Customizing Line Colors and Styles	31
7.5.4	Using the Marker Lines	31
7.5.5	Using a Zoom	31
7.5.6	Delta Measurements.....	31
7.6	Viewing Waveforms.....	32
7.6.1	Viewing an RMS Plot.....	33
7.6.2	Viewing a Frequency Plot	33
7.6.3	Viewing a Spectrum Chart.....	33
7.6.4	Viewing a Spectrum Table.....	35
7.6.5	Waveform Options	36
7.7	Viewing Synchronized Waveforms	38
7.8	Viewing additional logs and reports.....	39

Chapter 1 Introduction

1.1.1 Installation

For information about PAS installation see the document "PAS Installation Guide".

1.1.2 File Format

PAS use the Microsoft Access .mdb database format for setup and log files. This format allows you to store different types of logs to a single database as separate tables, and makes it easy to transport your databases onto other PCs.

1.1.3 Data Retrieving from the Meters

PAS allows you to retrieve all data logs from your meters at once and store them to a database, either on demand or on a time basis (e.g., daily or weekly) using a predefined schedule.

1.1.4 Embedded Communication Test

PAS incorporates the test features allowing you to test communication with your meters.

1.1.5 General Note

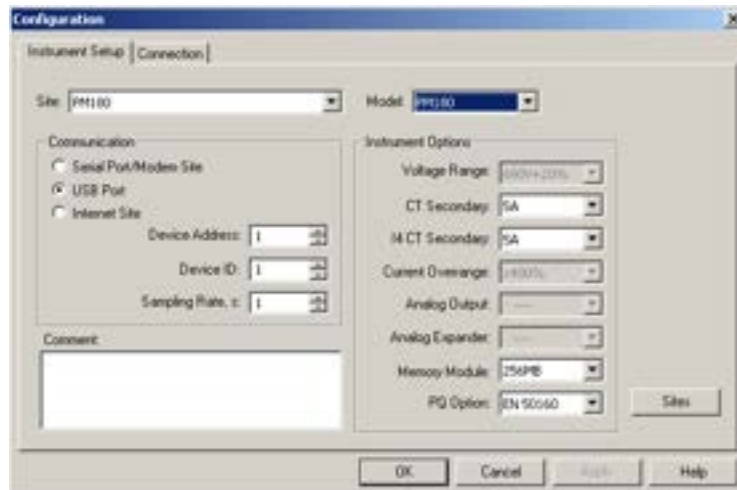
This manual includes the most common PAS features and options that are used for working with SATEC meters. For additional and more detailed information about PAS working with some specific meter see the manual of corresponded meter.

Chapter 2 Communicating with Your Meters

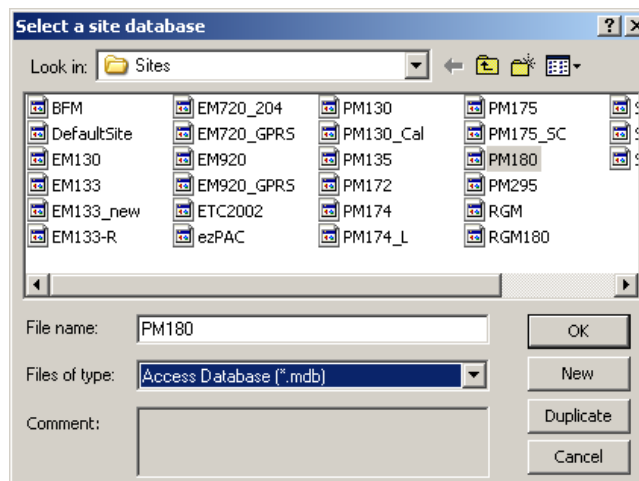
2.1 Creating a New Site

In order to communicate with your meters, you should create a separate site database for each one where all meter settings are stored. PAS keeps all site settings in a file with a name you give it and the extension .mdb. When you install PAS on your computer, a directory named "Sites" is created in the PAS installation directory. It is advised to keep all your site databases in this directory.

To create a new database for your meter, select 'Configuration' from the Tools menu, and then click 'Sites' at right on the 'Instrument Setup' tab.




From the 'Look in' box, select the directory where a new database will be stored. Type a site name for your meter in the 'File name' box, click 'New', and then click 'OK'. You will see the selected site's name in the 'Site' box. As you create new databases, their names are added to the site list that you can browse from this box.



In the 'Model' box, select your meter model type, and in the 'Instrument Options' group boxes, specify the voltage and current input and analog output (if any) options for your meter. If the meter has an onboard logging memory, select the correct memory module size for your meter.

You can add any comments to the 'Comments' box, such as meter location or any other data concerning this particular site.

Note: You cannot change the site properties or communication settings when the 'On-line' button  on the toolbar is checked. Uncheck it before entering the 'Configuration' dialogs.

2.2 Setting up Communications

You can communicate with your devices via a PC RS-232 serial port, through the Internet, via either a local Ethernet, or CELLULAR modem, and via the USB port.

To configure your communications:

1. Select Configuration from the Tools menu. Under the Communication group on the Instrument Setup tab, select the type of a connection for your device.
2. Set the device communication address you assigned to the meter. When communicating via the Ethernet or a CELLULAR modem, the meter responds to any address you select.
3. In the "Sampling Rate" box, select a rate at which PAS updates data on the screen when polling the device via the PAS Data Monitor.

The communication protocol and port settings must match the settings made in your device.

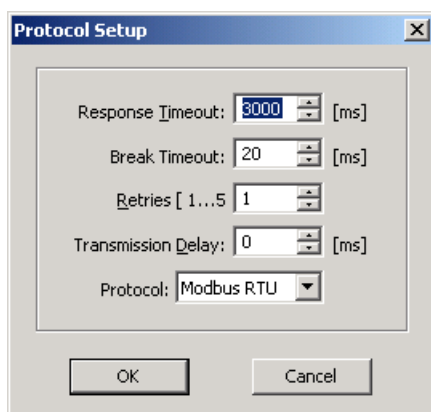
2.2.1 Communicating through a Serial Port

On the 'Connection' tab, select from the 'Device' box a COM port and click on 'Configure' to specify the baud rate and data format for the port. Choose the same baud rate and data format as you have set in the meter, and then click 'OK'.

Select Serial Port/Modem Site on the Configuration tab, and then click on the Connection tab to configure your serial port settings.

Selecting the Communications Protocol

1. On the Connection tab, click Protocol.

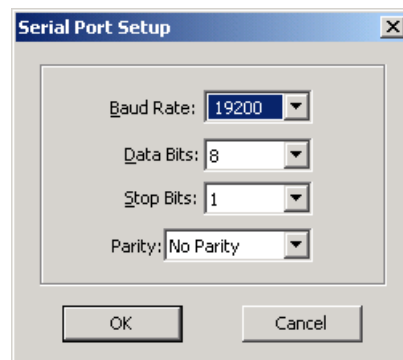


2. In the "Protocol" box, select the same communications protocol as you have in your device.
3. The remaining settings in this dialog do not normally need to be changed.
4. In the "Response Time-out" box, define the maximum time that PAS should wait for the meter response before announcing a failure. When communicating through a CELLULAR modem, this time may require some adjustment.

5. The “Break Time-out” box defines the maximum idle time that PAS waits after receiving the last message character to close a connection. This setting is important only when PAS is running the Modbus RTU or DNP3 or IEC 60870-5 protocols. It does not affect Modbus ASCII communications. The default value of 10 ms is usually sufficient for reliable communications, but the load on your PC can affect it. If there are many applications running on your PC, PAS might be prevented from responding to received characters fast enough, so it may close the communication while the device is still transmitting a message. If you frequently receive the message “Communication failed”, this could mean that “Break Time-out” should be increased. This time is added to the message transfer time, however, increasing it excessively slows down communications.
6. The “Retries” box defines the number of attempts that PAS uses to receive a response from the device in the event the communication fails before announcing a communication failure.

Configuring a Serial Port

1. On the Connection tab, select a COM port from the “Device” box, and then click Configure.



2. Specify the baud rate and data format for the port. Choose the same baud rate and data format as you have set in the device, and then click OK.

2.2.2 Communicating through a Modem

Selecting the Communications Protocol

On the Connection tab, click Protocol, and then select the protocol settings as shown above for a serial port.

Configuring a Modem

1. On the Connection tab, select from the “Device” box a local modem installed on your PC through which you communicate with your device.
2. Click on Phones to add the phone number of the remote device to the phone list.
3. Type the phone number in the “Phone number” box, add comments if you desire, click Add, and then click OK.

4. From the "Phone number" box on the Connection tab, select the phone number from the list, and then click OK.

2.2.3 Communicating through Internet

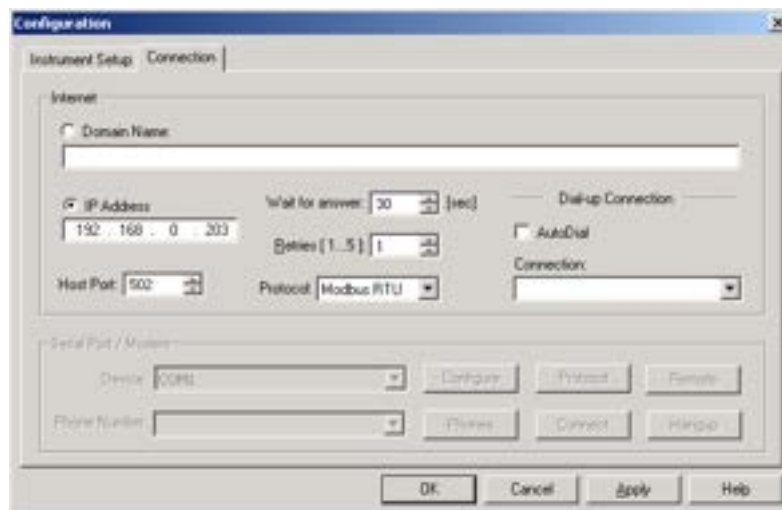
1. Click on the Connection tab.
2. Click on the "IP address" and type in the IP address of the meter.
3. In the "Protocol" box, select the communications protocol for the TCP port. PAS automatically adjusts the TCP port number in the "Host Port" box, corresponding to the selected protocol. Use the following references to check the TCP port setting:

502 - Modbus RTU

20000 - DNP3.0

2404- IEC 60870-5

5002 – Modbus ASCII or SATEC ASCII



4. You can also adjust the amount of time that PAS waits for a connection before announcing an error and the number of retries PAS uses to receive a response from the device if communications fail.

2.2.4 Communicating through a CELLULAR Modem

For information how to setup communication through CELLULAR modem see the manual of corresponded meter.

2.2.5 Communicating through a USB

On the Instrument Setup tab, click USB Port, and then click OK.

Chapter 3 Setting Up the Device

3.1 Creating Setups for your Meters Off-Line

PAS allows you to prepare setup data for your device off-line without the need to have it connected to your PC.

Select the device site from the list box on the PAS toolbar, and then select the desired setup group from the Meter Setup menu. Click on the tab with the setup you want to create or modify and fill in the boxes with the desired configuration data for your device. Click the "Save as..." button to store the data to the site database.


Note: PAS uses the Basic Setup data as a reference in all setup dialogs. Create the Basic Setup configuration for your meter first and save it to the site database before preparing other meter setups.


To reuse setups from another site, you can simply copy them to your present site database. Click Open, select the desired site database, and then click OK. The opened setup is copied to your site database.

You can also copy all setups from one site database into another site's database. Select a device site from the list box on the toolbar from which you want to reproduce setups, and then select "Copy to..." from the Meter Setup menu. Select the site database to which to copy setups, and then click OK.

3.2 Downloading Setups to Your Meters


PAS allows you to update each setup in your meter one at time or to download all setups together from the site database.

To update a particular setup in your meter, check the 'On-line' button  on the toolbar, select a meter site from the list box on the toolbar, and then select the desired setup group from the 'Meter Setup' menu. Click on the pane with the name of the setup you want to download to the meter, and then click 'Send'.

To download all setups to your meter at once, check the 'On-line' button  on the toolbar, select a meter site from the list box on the toolbar, and then select 'Download Setups' from the 'Meter Setup' menu. Reply 'Yes' to the PAS warning message.

3.3 Uploading Setups from Your Meters

PAS allows you to update the site databases with the setups currently presented in your meters.

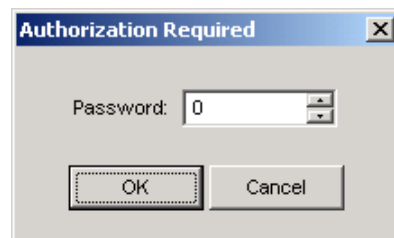
To upload the setups from the meter to the site database, check the 'On-line' button  on the toolbar, select a meter site from the list box on the toolbar, and then select 'Upload Setups' from the 'Meter Setup' menu. Reply 'Yes' to the PAS warning message.

Chapter 4 Device Control

This chapter describes how to change device modes, view and clear device diagnostics, and directly operate relay outputs in your meter from PAS. To access device control options you should have your device online.

4.1 Authorization


If your device is password protected, you are prompted for the password when you send your first command to the device.

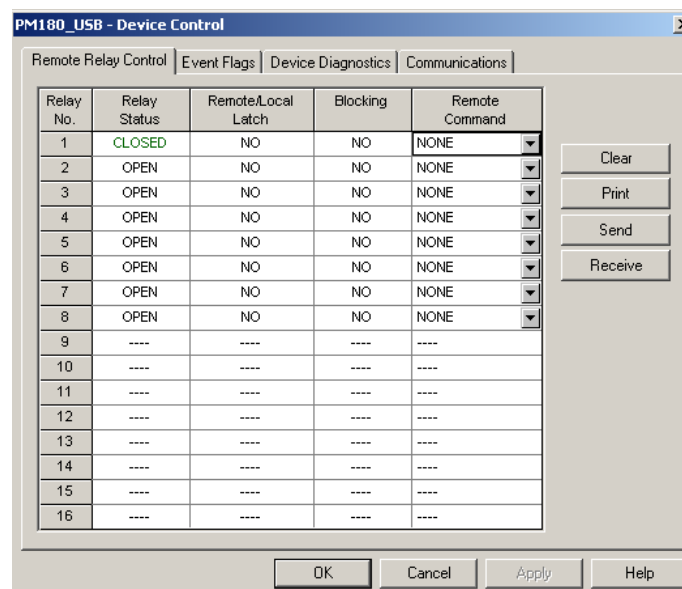


Enter the password and click OK. If your authorization was successful, you are not prompted for the password again until you close the dialog window.

4.2 Remote Relay Control

From PAS, you can send a command to any relay in your device or release a latched relay, except of the relays that are linked to the internal pulse source. Such relays cannot be operated outside of the device.

To enter the Remote Relay Control dialog, check the On-line  button on the PAS toolbar, select Device Control from the Monitor menu, and then click on the Remote Relay Control tab.



To send a remote command to the relay:

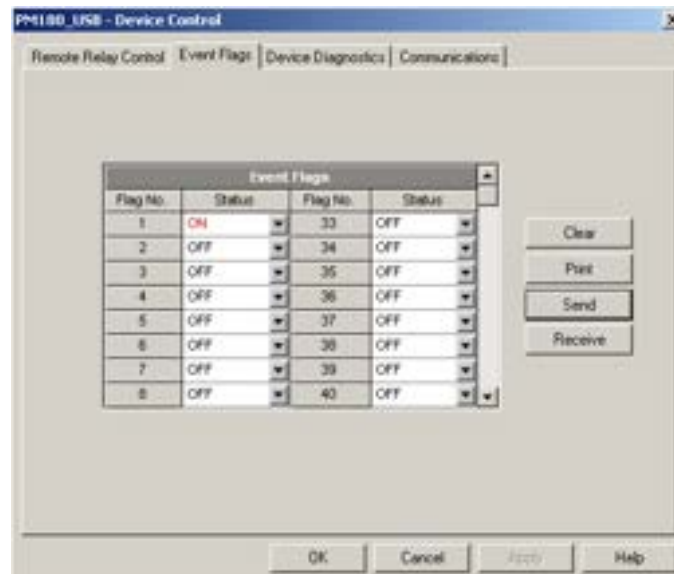
1. From the "Relay Command" box for the relay, select the desired command.
2. Click on Send.

The dialog shows you the present relay status and whether it is latched by a remote command or locally from the setpoints.

4.3 Device Event Flags

Some meters can have event flags that are intended for use as temporary event storage and can be tested and operated from the control setpoints. You can transfer an event to the setpoints and trigger its operation remotely by changing the event status through PAS.

To enter the Event Flags dialog, check the On-line button on the PAS toolbar, select Device Control from the Monitor menu, and then click on the Event Flags tab.




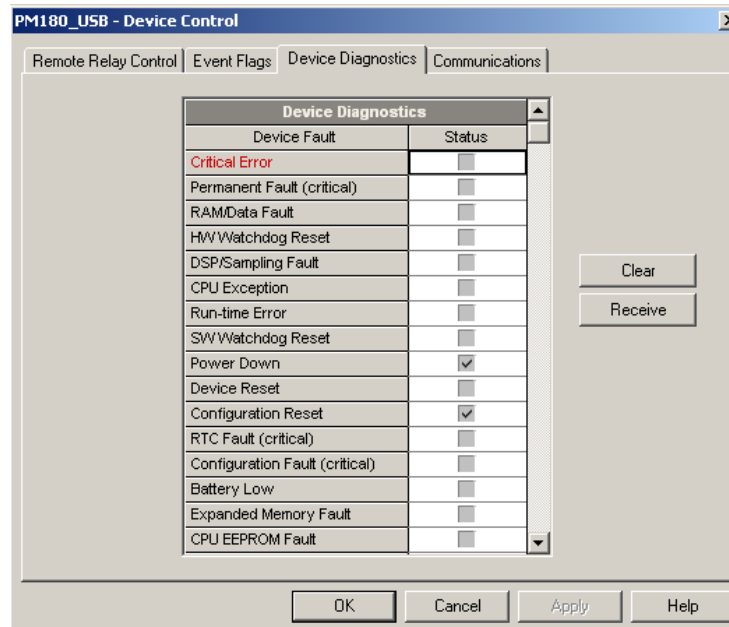
To change the status of an event flag:

1. From the "Status" box for the event flag, select the desired flag status.
2. Click on Send.

4.4 Viewing and Clearing Device Diagnostics

You can examine the present device diagnostics status and clear it via PAS.


To enter the Device Diagnostics dialog, check the On-line  button on the PAS toolbar, select Device Control from the Monitor menu, and then click on the Device Diagnostics tab.



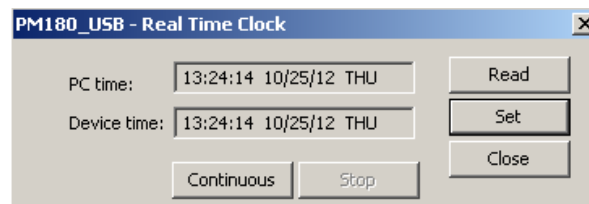
To clear the device diagnostics events, click on Clear.

More details about device diagnostics see in the manual of corresponded meter.


4.5 Updating the Clock

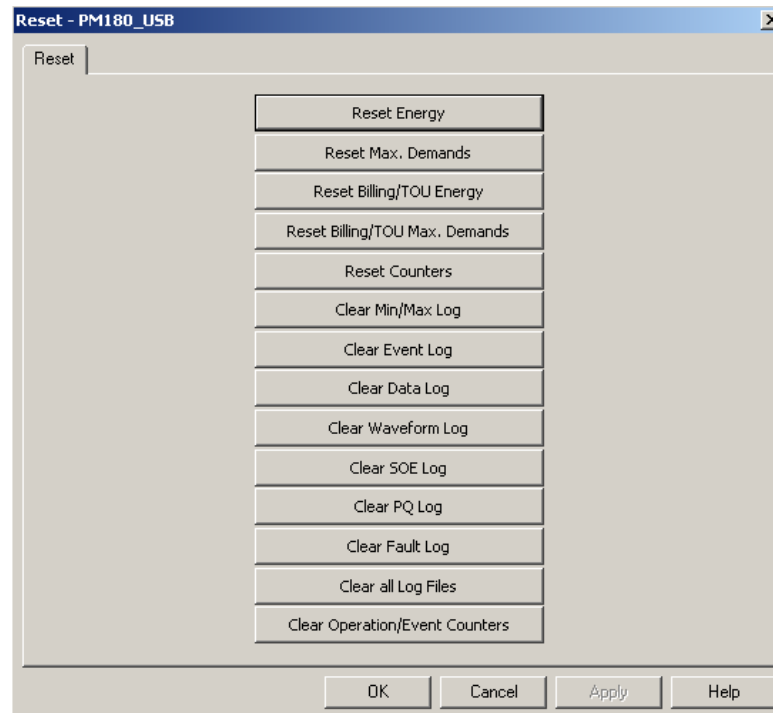
To update the Real-Time Clock (RTC) in your device, select a device site from the list box on the toolbar, check the On-line button  on the PAS toolbar, and then select RTC from the Monitor menu.

The RTC dialog displays the current PC time and the time in your device. To synchronize the device clock with the PC clock, click Set. You need not update the clock in your device if the clock is synchronized to the external GPS master clock.



4.6 Resetting Accumulators and Clearing Log Files

PAS allows you to clear energy accumulators, maximum demands, Min/Max log registers, counters and log files in your device. To open the Reset dialog, select a device site from the list box on the toolbar, check the On-line button  on the toolbar, and then select Reset from the Monitor menu.



To reset the desired accumulation registers or to clear a file, click on the corresponding button. If a target has more than one component, you are allowed to select components to reset. Check the corresponding boxes, and then click OK.

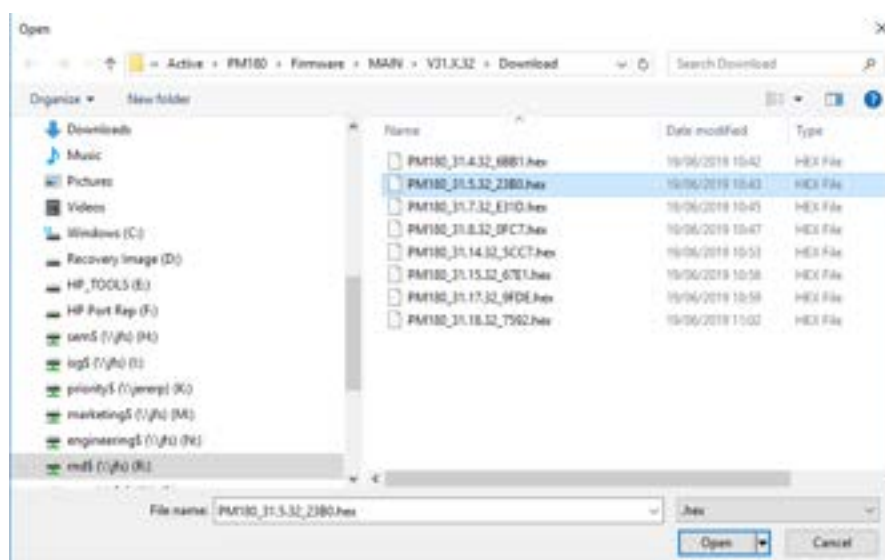
4.7 Upgrading Meter Firmware

You can upgrade device firmware through any communication port installed in your meter: a serial port, USB, Ethernet, a wireless cellular network or a telephone modem.

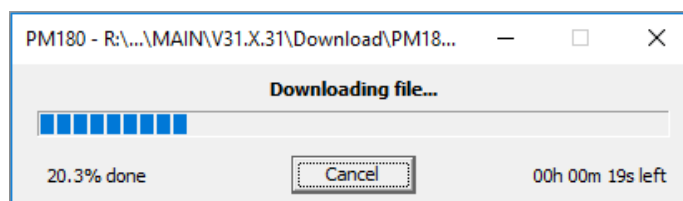
Downloading firmware is only supported through the Modbus RTU/ASCII and Modbus/TCP protocols (more exactly see in manual of corresponded meter). If you are connected to the meter via a serial port, ensure that it operates in Modbus mode. It is also recommended to set the serial port baud rate to 115,200 bps.

To download a firmware file to your meter:

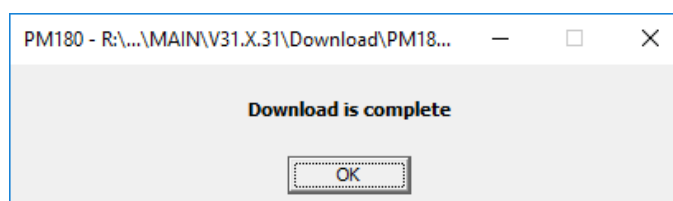
1. Check the On-line button on the PAS toolbar, select Flash Downloader from the Monitor menu, and then confirm changes.



2. Point to the firmware upgrade file, click Open, and then confirm upgrading the meter.
3. When asked for the password, type the meter password, and click OK.



4. Wait until PAS completes downloading the file. It takes about 9-10 minutes at 115,200 bps via a serial port, or about 20 seconds via a USB port, to download the file to the meter.



5. Wait about 10 seconds until the meter completes burning firmware into the flash and reboots before any further manipulating with the meter.

NOTES

1. When the meter reboots, the Internet connection via the Ethernet, a telephone or a cellular network may be temporarily lost. You may need to wait a short duration before PAS restores a connection with your meter.
2. If you are connected to the meter via a wireless cellular network using a temporary IP address, the IP address you used for connecting to the meter will no longer be in effect. You should check the meter for a new IP address either from the front display, or via PAS using another communication port.


Chapter 5 Monitoring Your Meters

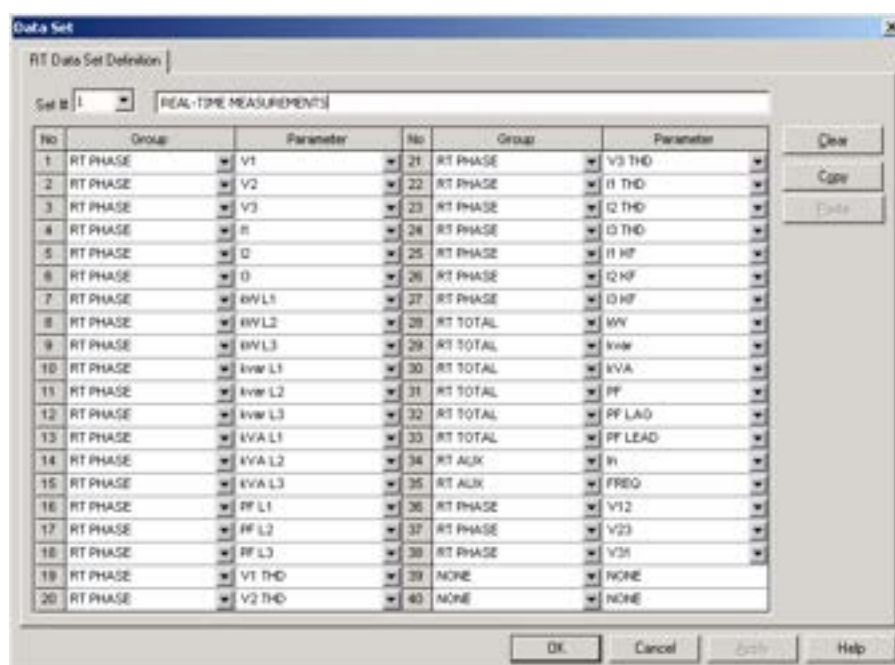
5.1 Viewing Real-time Data

Real-time data is continuously retrieved from your devices and updated on the screen at the rate you defined in the Instrument Setup.

To get real-time data from your device, select the device site from the list box on the PAS toolbar, point to RT Data Monitor on the Monitor menu, and then select a data set you want to view.





5.1.1 Organizing Data Sets

PAS supports 33 programmable data sets with up to 40 data parameters. Set #0 is intended for simple meters, which have a limited number of parameters, and is not recommended for the use with the meter. To re-organize data sets, select Data Set from the Monitor menu or click on the button  on the local toolbar.



Some data sets are preset for your convenience and others are empty. You can freely modify data sets.

5.1.2 Polling Devices

To run data polling, check the On-line button  on the PAS toolbar, and then click on either the Poll button  or Continuous Poll button  on the local toolbar. Click on the Stop button  to stop continuous polling.

You can open as many data monitor windows as you wish, either for different sites, or for the same site using different data sets.

An open data monitor window is linked to the current site and does not change if you select another site in the site list.

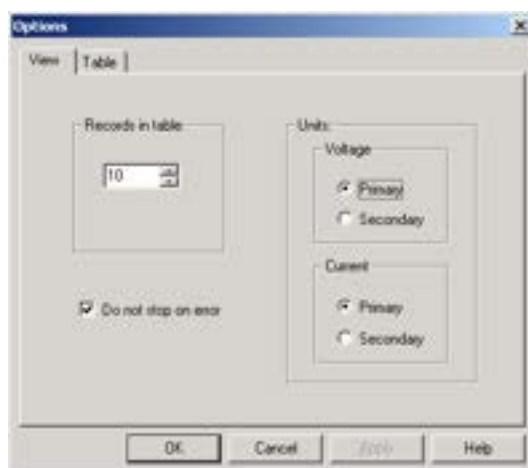
You can view acquired data in a tabular form or in a graphical form as a data trend.

The following picture shows a typical data monitor window.

No.	Date/Time	V1	V2	V3	I1	I2	I3	W1	W2	W3	S1	S2	S3	KVA1	KVA2	KVA3	PF1	PF2	PF3	W1	W2	W3
1	10/15/12 13:00:01	230.2	230.3	230.4	0.01	0	0	0	0	0	0	0	0	0	0	0	0	0	0	0	0	0
2	10/15/12 13:00:02	230.1	230.2	230.3	0	0	0	0	0	0	0	0	0	0	0	0	0	0	0	0	0	0
3	10/15/12 13:00:03	230.4	230.5	230.6	0.01	0	0	0	0	0	0	0	0	0	0	0	0	0	0	0	0	0
4	10/15/12 13:00:04	230.2	230.3	230.4	0.01	0	0	0	0	0	0	0	0	0	0	0	0	0	0	0	0	0
5	10/15/12 13:00:05	230.2	230.3	230.4	0.01	0.01	0	0	0	0	0	0	0	0	0	0	0	0	0	0	0	0
6	10/15/12 13:00:06	230.2	230.3	230.4	0.01	0	0	0	0	0	0	0	0	0	0	0	0	0	0	0	0	0
7	10/15/12 13:00:07	230.3	230.2	230.2	0.01	0	0	0	0	0	0	0	0	0	0	0	0	0	0	0	0	0
8	10/15/12 13:00:08	230.3	230.2	230.3	0.01	0	0	0	0	0	0	0	0	0	0	0	0	0	0	0	0	0
9	10/15/12 13:00:09	230.4	230.4	230.3	0.01	0	0	0	0	0	0	0	0	0	0	0	0	0	0	0	0	0
10	10/15/12 13:00:10	230.3	230.3	230.3	0	0	0	0	0	0	0	0	0	0	0	0	0	0	0	0	0	0
11	10/15/12 13:00:11	230.3	230.3	230.3	0.01	0.01	0	0	0	0	0	0	0	0	0	0	0	0	0	0	0	0
12	10/15/12 13:00:12	230.1	230.4	230.6	0.01	0	0	0	0	0	0	0	0	0	0	0	0	0	0	0	0	0
13	10/15/12 13:00:13	230.3	230.3	230.2	0.01	0	0	0	0	0	0	0	0	0	0	0	0	0	0	0	0	0
14	10/15/12 13:00:14	230.5	230.6	230.6	0	0	0	0	0	0	0	0	0	0	0	0	0	0	0	0	0	0
15	10/15/12 13:00:15	230.4	230.3	230.3	0.01	0	0	0	0	0	0	0	0	0	0	0	0	0	0	0	0	0
16	10/15/12 13:00:16	230.4	230.3	230.4	0.01	0	0	0	0	0	0	0	0	0	0	0	0	0	0	0	0	0
17	10/15/12 13:00:17	230.3	230.3	230.3	0	0	0	0	0	0	0	0	0	0	0	0	0	0	0	0	0	0
18	10/15/12 13:00:18	230.3	230.3	230.3	0.01	0	0	0	0	0	0	0	0	0	0	0	0	0	0	0	0	0
19	10/15/12 13:00:19	230.3	230.3	230.3	0.01	0	0	0	0	0	0	0	0	0	0	0	0	0	0	0	0	0
20	10/15/12 13:00:20	230.5	230.6	230.6	0.01	0	0	0	0	0	0	0	0	0	0	0	0	0	0	0	0	0
21	10/15/12 13:00:21	230.4	230.3	230.3	0.01	0	0	0	0	0	0	0	0	0	0	0	0	0	0	0	0	0
22	10/15/12 13:00:22	230.3	230.2	230.2	0.01	0	0	0	0	0	0	0	0	0	0	0	0	0	0	0	0	0
23	10/15/12 13:00:23	230.4	230.3	230.2	0.01	0.01	0.01	0	0	0	0	0	0	0	0	0	0	0	0	0	0	0
24	10/15/12 13:00:24	230.3	230.2	230.3	0.01	0	0	0	0	0	0	0	0	0	0	0	0	0	0	0	0	0
25	10/15/12 13:00:25	230.3	230.3	230.3	0.01	0	0	0	0	0	0	0	0	0	0	0	0	0	0	0	0	0
26	10/15/12 13:00:26	230.7	230.3	230.2	0.01	0	0	0	0	0	0	0	0	0	0	0	0	0	0	0	0	0
27	10/15/12 13:00:27	230.2	230.4	230.2	0.01	0.01	0	0	0	0	0	0	0	0	0	0	0	0	0	0	0	0
28	10/15/12 13:00:28	230.6	230.3	230.3	0	0	0	0	0	0	0	0	0	0	0	0	0	0	0	0	0	0
29	10/15/12 13:00:29	230.3	230.3	230.3	0.01	0	0	0	0	0	0	0	0	0	0	0	0	0	0	0	0	0
30	10/15/12 13:00:30	230.8	230.4	230.4	0.01	0	0	0	0	0	0	0	0	0	0	0	0	0	0	0	0	0
31	10/15/12 13:00:31	230.7	230.3	230.2	0.01	0	0	0	0	0	0	0	0	0	0	0	0	0	0	0	0	0
32	10/15/12 13:00:32	230.3	230.4	230.5	0.01	0	0	0	0	0	0	0	0	0	0	0	0	0	0	0	0	0
33	10/15/12 13:00:33	230.8	230.3	230.3	0.01	0	0	0	0	0	0	0	0	0	0	0	0	0	0	0	0	0
34	10/15/12 13:00:34	230.3	230.3	230.2	0.01	0	0	0	0	0	0	0	0	0	0	0	0	0	0	0	0	0
35	10/15/12 13:00:35	230.3	230.3	230.3	0.01	0	0	0	0	0	0	0	0	0	0	0	0	0	0	0	0	0
36	10/15/12 13:00:36	230.2	230.3	230.2	0.01	0.01	0	0	0	0	0	0	0	0	0	0	0	0	0	0	0	0
37	10/15/12 13:00:37	230.8	230.4	230.4	0.01	0	0	0	0	0	0	0	0	0	0	0	0	0	0	0	0	0
38	10/15/12 13:00:38	230.3	230.4	230.4	0.01	0	0	0	0	0	0	0	0	0	0	0	0	0	0	0	0	0
39	10/15/12 13:00:39	230.3	230.4	230.4	0.01	0	0	0	0	0	0	0	0	0	0	0	0	0	0	0	0	0
40	10/15/12 13:00:40	230.3	230.4	230.4	0.01	0	0	0	0	0	0	0	0	0	0	0	0	0	0	0	0	0
41	10/15/12 13:00:41	230.3	230.4	230.4	0.01	0	0	0	0	0	0	0	0	0	0	0	0	0	0	0	0	0
42	10/15/12 13:00:42	230.3	230.4	230.4	0.01	0	0	0	0	0	0	0	0	0	0	0	0	0	0	0	0	0
43	10/15/12 13:00:43	230.3	230.4	230.4	0.01	0	0	0	0	0	0	0	0	0	0	0	0	0	0	0	0	0
44	10/15/12 13:00:44	230.3	230.4	230.4	0.01	0	0	0	0	0	0	0	0	0	0	0	0	0	0	0	0	0
45	10/15/12 13:00:45	230.3	230.4	230.4	0.01	0	0	0	0	0	0	0	0	0	0	0	0	0	0	0	0	0
46	10/15/12 13:00:46	230.3	230.4	230.4	0.01	0	0	0	0	0	0	0	0	0	0	0	0	0	0	0	0	0
47	10/15/12 13:00:47	230.3	230.4	230.4	0.01	0	0	0	0	0	0	0	0	0	0	0	0	0	0	0	0	0
48	10/15/12 13:00:48	230.3	230.4	230.4	0.01	0	0	0	0	0	0	0	0	0	0	0	0	0	0	0	0	0
49	10/15/12 13:00:49	230.3	230.4	230.4	0.01	0	0	0	0	0	0	0	0	0	0	0	0	0	0	0	0	0
50	10/15/12 13:00:50	230.3	230.4	230.4	0.01	0	0	0	0	0	0	0	0	0	0	0	0	0	0	0	0	0
51	10/15/12 13:00:51	230.3	230.4	230.4	0.01	0	0	0	0	0	0	0	0	0	0	0	0	0	0	0	0	0
52	10/15/12 13:00:52	230.3	230.4	230.4	0.01	0	0	0	0	0	0	0	0	0	0	0	0	0	0	0	0	0
53	10/15/12 13:00:53	230.3	230.4	230.4	0.01	0	0	0	0	0	0	0	0	0	0	0	0	0	0	0	0	0
54	10/15/12 13:00:54	230.3	230.4	230.4	0.01	0	0	0	0	0	0	0	0	0	0	0	0	0	0	0	0	0
55	10/15/12 13:00:55	230.3	230.4	230.4	0.01	0	0	0	0	0	0	0	0	0	0	0	0	0	0	0	0	0
56	10/15/12 13:00:56	230.3	230.4	230.4	0.01	0	0	0	0	0	0	0	0	0	0	0	0	0	0	0	0	0
57	10/15/12 13:00:57	230.3	230.4	230.4	0.01	0	0	0	0	0	0	0	0	0	0	0	0	0	0	0	0	0
58	10/15/12 13:00:58	230.3	230.4	230.4	0.01	0	0	0	0	0	0	0	0	0	0	0	0	0	0	0	0	0
59	10/15/12 13:00:59	230.3	230.4	230.4	0.01	0	0	0	0	0	0	0	0	0	0	0	0	0	0	0	0	0
60	10/15/12 13:01:00	230.3	230.4	230.4	0.01	0	0	0	0	0	0	0	0	0	0	0	0	0	0	0	0	0

Polling Options

To change the polling options, click on the Data Monitor window with the right mouse button and select Options.



If you check “Do not stop on errors”, polling is resumed automatically when a communication error occurs, otherwise polling stops until you restart it manually.

5.1.3 Viewing a Data Table

Changing the Data View

PAS displays data in either a single record or multi-record view. To change the view, click on the Data Monitor window with the right mouse button and select either Wrap to see a single record, or UnWrap to go to the multi-record view.



Adjusting the Number of Rows in a Multi-Record View

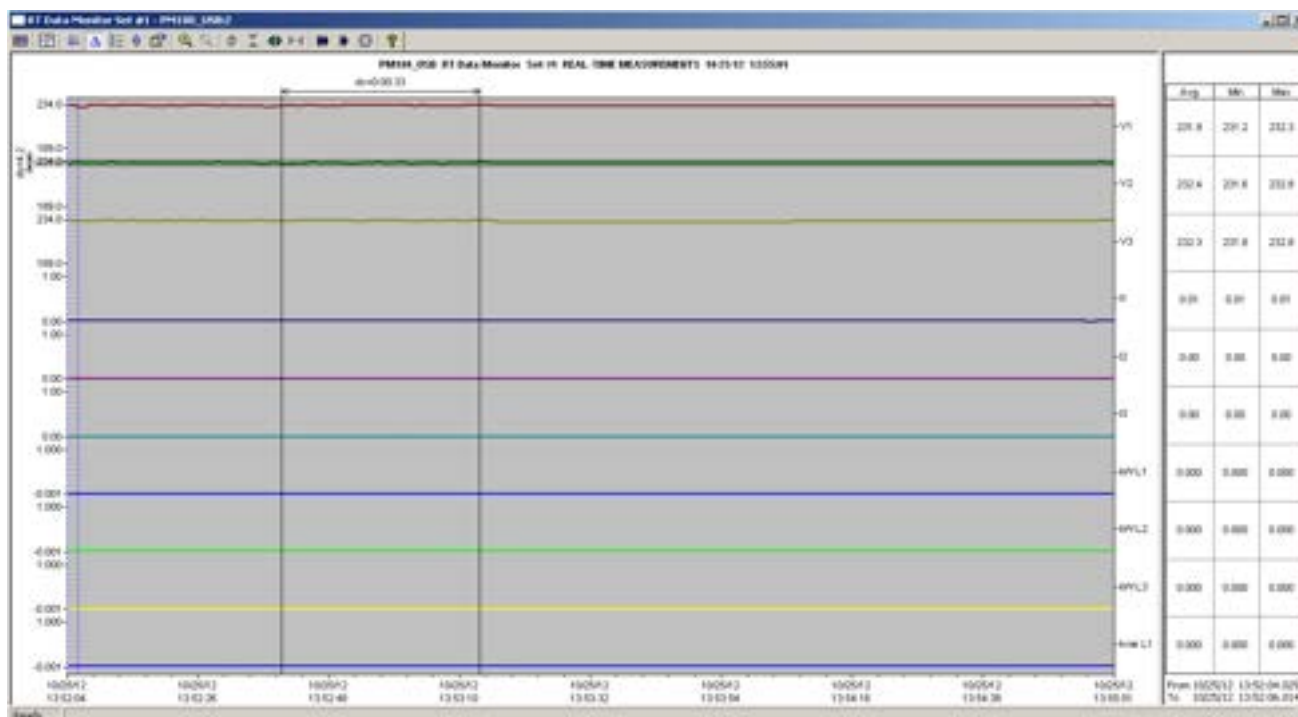
Click the window with the right mouse button, select Options, adjust the number of records you want to see in the window, and then click OK. When the number of retrieved records exceeds the number of rows in the window, the window scrolls up so that older records are erased.

Selecting Primary and Secondary Units

Voltages and currents can be displayed in primary or secondary units. To select primary or secondary units for your data views, click on the monitor window with the right mouse button, select Options, select the desired units for voltages and currents, and then click OK.

5.1.4 Viewing Data Trend

To view a data trend, click on the  button on the local toolbar. To change the time range for your graph, click on the  button on the local toolbar, and then select the desired date and time range.



Selecting Channels

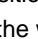
To select data channels for your trend, click on the trend window with the right mouse button, select "Channels", check the channels you want displayed, and then click OK.

Customizing Line Colors and Styles


Trend lines for different channels can be shown in different colors using different line styles. To change the colors or line styles, click on the trend window with the right mouse button, select "Options...", click on the "Display" tab, adjust colors and styles for channels, and then click OK. You can also change the colors for the background and gridlines.

Using the Marker Lines



The trend window has two blue dashed marker lines. The left marker indicates the starting position for calculating the average and peak values, and the right marker indicates the end position.

To change the marker position, click on the trend window with the right mouse button and select Set Marker, or click on the  button on the window toolbar, and then click with left mouse button on the point where you want to put the marker. You can also drag both markers with the mouse, or use the right and left arrow keys on your keyboard to change the marker position. Click on the trend pane with the mouse before using the keyboard, to allow the keyboard to get your input.


Delta Measurements

To measure the distance between two trend points, click on the Delta button  on the toolbar, click with the left mouse button on the first point, and then click on the second point. The first reference point is frozen until you close and reopen Delta, while the second point can be placed anywhere within the trend line. You can measure a delta in both directions. To disable Delta, click on the Delta button again.


Using a Zoom

You can use a horizontal and a vertical zoom to change size of your graph. Use the buttons  on your local toolbar representing green arrowheads to zoom in or out of the trend graph. Every click on these buttons gives you a 100-percent horizontal zoom. Two buttons  representing a magnifying glass give you a proportional zoom in both directions.

5.1.5 Saving Data to a File



To save retrieved data to a file for later analysis, click on the Save button , select a directory where you want your log files to be stored, select a database or type the name for a new database, and then click Save. To avoid confusion, do not store data files into the “Sites” directory where site databases are located.


5.1.6 Printing Data

To print retrieved data, click the  button on the PAS toolbar, select a printer, and then click OK. To check the report, as it will look when printed, select Print Preview from the File menu.

5.1.7 Copying Data

To copy the entire data table or a part of a table into the Clipboard or into another application such as Microsoft Excel or Word:


1. Click on the Data Monitor window with the right mouse button and choose Select All, or click on the upper-left corner of the data table (where the “No.” label is displayed).
2. Click on the Data Monitor window with the right mouse button again and choose Copy or click on the Copy button  on the PAS toolbar.
3. Run an application to where you want to copy data, position cursor at the correct place, and then click on the Paste button  on the application's toolbar, or select Paste from the Edit menu.


If you want only a part of data to be copied, select with the mouse while holding the left mouse button the rows or columns in the table you want to copy, and then click on the Copy button  on the PAS toolbar.

5.1.8 Real-time Data Logging

PAS allows you to log polled data records to a database automatically at the time it updates the Data Monitor window on the screen.


To setup the real-time logging options:



1. Open the Data Monitor window.
2. Click on the “RT Logging On/Off”  button on the local toolbar, or select “RT Logging Options” from the Tools menu.
3. Select a database, or type the name for a new database and select a directory where you want to save it.
4. Select the number of tables, and the number of records in each table you want recorded.
5. Adjust the file update rate for automatic recording. It must be a multiple of the sampling rate that you defined in the Instrument Setup dialog.
6. Click Save.

When you run real-time data polling, PAS automatically saves retrieved records to the database at the rate you specified. The “RT Logging On/Off” button  on the toolbar should be checked all the time to allow PAS to perform logging. You can suspend logging by un-checking this button, and then resume logging by checking it again.

5.2 Viewing Real-time Min/Max Log

To retrieve the real-time Min/Max log data from your device, select the device site from the list box on the PAS toolbar, point to RT Min/Max Log on the Monitor menu, and then select a data set you want to view.





PAS supports nine programmable data sets with up to 40 data parameters in each one. To re-organize data sets, select Data Set from the Monitor menu or click on the  button on the toolbar. You can modify data sets in the way that is convenient for your use.

To retrieve the selected Min/Max log data, check the On-line button  on the PAS toolbar, and then click on the Poll button .

You can save retrieved data to a file or print it in the same manner as described in the previous section.

5.3 Viewing Real-time Waveforms

To retrieve the real-time waveforms from your device, select the device site from the list box on the toolbar, and then select RT Waveform Monitor from the Monitor menu.

To retrieve waveforms, check the On-line button  on the PAS toolbar, and then click on either the Poll button  or Continuous poll button . Click on the Stop button  to stop continuous polling.

PAS normally retrieves eight 4-cycle AC waveforms (V1-V4 and I1-I4) sampled at a rate of 128 samples per cycle. If you wish to get only waveforms for selected phases, select "Options" from the Tools menu, click on the Preferences tab, check the phases you want polled, and then click OK.

To view AI waveforms, or to change channels displayed in the window, click on the waveform window with the right mouse button, select "Channels", check channels you want displayed, and then click OK.

Retrieved waveforms can be displayed in different views as overlapped or non-overlapped waveforms, as RMS cycle-by-cycle plot, or as a harmonic spectrum chart or table. See par.7.5 for information on using different waveform views.


Chapter 6 Retrieving Recording Files

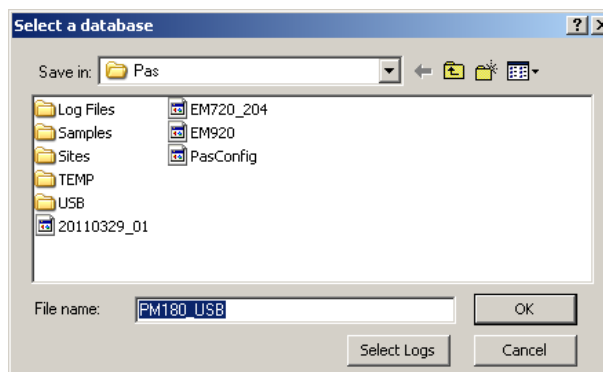
Using PAS, you can retrieve recorded events, data and waveforms from your devices and save them to files on your PC in the MS Access database format.

Historical data can be uploaded on demand any time you need it, or periodically through the Upload Scheduler that retrieves data automatically on a predefined schedule, for example, daily, weekly or monthly. If you do not change the destination database location, the new data is added to the same database so you can store long-term data profiles in one database regardless of the upload schedule you selected.

6.1 Uploading Files on Demand

To retrieve the log files from your device:

1. Select a device site from the list box on the PAS toolbar.
2. Check the On-line button .
3. Select Upload Logs from the Logs menu.



4. Select a database, or type the name for a new database, and select a directory where you want to save it.
5. Click on the “Select Logs” button and check boxes for logs you want to be retrieved from the device.



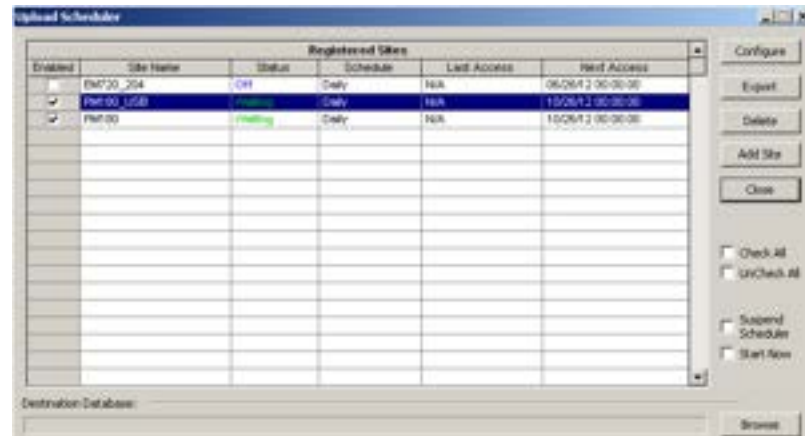
6. If you wish to retrieve data starting with a known date, check the “From” box and select the start date for retrieving data.

7. If you wish to retrieve data recorded before a known date, check the "To" box and select the last date for retrieving data.
8. Click OK.

6.2 Using the Upload Scheduler

6.2.1 Setting Up the Upload Scheduler

1. Select Upload Scheduler from the Logs menu.




2. Click Add Site, point to the site database for which you want to organize the schedule, and then click OK.
3. Click Browse and select a database for storing retrieved data, or type the name for a new database, select a directory where you want to save it, and then click OK.
4. Click Configure or double click on the site row.



5. Select a daily, weekly or monthly schedule, and adjust the start time. If you wish to upload data periodically in predefined intervals, click on "Periodic" and define the time period in hours and minutes.
6. Select the number of attempts to upload data in the event of temporary communication problems

or unavailability of your device, and the delay between attempts in minutes and seconds.

7. If you wish to use the schedule to synchronize the device clock with your PC, check the "RTC Synchronization Enable" box. If your device is password protected by a communications password, type in the password you set in the device to allow PAS to update the clock.
8. Click on the Select Logs button, check the boxes for logs you want to upload on a schedule, and then click OK.
9. Check the Enabled box at left to activate a schedule for the device.
10. Click OK to store your schedule.

To keep the Upload Scheduler running, the On-line button  on the PAS toolbar must be checked all the time. If you uncheck it, the scheduler stops operations. This does not cause loss of data, since the scheduler will resume operations when you check this button again.

6.2.2 Suspending the Scheduler

To suspend the Upload Scheduler, check the Suspend Scheduler box at right. To activate the Upload Scheduler, leave this box unchecked.

6.2.3 Running the Scheduler on Demand

You can run the scheduler at any time outside the schedule by checking the Start Now box at right. This is a one-time action. After uploading is completed, the Upload Scheduler un-checks this box automatically.

6.2.4 Reviewing Upload Problems

When the Upload Scheduler fails to retrieve data from the device, or some data is missing, or another problem occurs, it puts an error message to the log file. To review this file, select System Log from the View menu.

6.3 Retrieving EN50160 Statistics Files

The EN50160 statistics files and present contents of the EN50160 evaluation counters can be retrieved by PAS and stored to a database for later analysis.

6.3.1 Using the Upload Scheduler

The PAS Upload Scheduler automatically retrieves the EN50160 statistics files on a daily or weekly basis depending on the EN50160 evaluation period selected in your device.

Select the Daily or Weekly schedule for the EN50160 statistics files when configuring the upload schedule. Check the Data log #9 and #10 boxes in the Select Logs dialog box for uploading the EN50160 Compliance Statistics and EN50160 Harmonics Survey files respectively.

6.3.2 Retrieving EN50160 Statistics Files on Demand




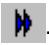
To manually retrieve the EN50160 statistics files on demand, select "Upload EN50160 Compliance Stats" from the Logs menu and specify the database to which you want the data to be stored.

6.3.3 Retrieving the EN50160 Online Statistics

To retrieve the present contents of the EN50160 statistics counters accumulated since the beginning of the current evaluation period, select "Upload EN50160 Online Stats" from the Logs menu and specify the database to which you want the data to be stored. The statistics records are marked as online events.

6.4 Viewing Historical Data On-line

Sometimes, it is useful to review a particular piece of historical data on-line at the time you expect new events to appear in the log. PAS allows you to retrieve historical data from a particular log without storing it to a file. The data appears only in the window on your screen. You can save it manually to the database.

To view the log data on-line, check the On-line button  on the PAS toolbar, select the log you want to retrieve in the Logs menu, and then click on the Poll button . Only new log records are retrieved from the device. If you want to review the entire log from the beginning, click on the Restore log button , and then click on the Poll button .


Notice that there is a difference between retrieving waveforms on-line and viewing waveforms from a file. The online waveforms are read one record at a time, so that a multi-record waveform series may not be viewed as a single waveform.

See Chapter 7 Viewing Log Files for information on using different log views.

Chapter 7 Viewing Log Files



7.1 General Operations

7.1.1 Opening a Log File


To open a log file, click on the Open button  on the PAS toolbar, or select “Open...” from the File menu. In the “Files of type” box, select “Access Database (*.mdb)”, select a directory where your files are located, point to the file you want to open, select a desired table on the right pane, and then click Open.

7.1.2 Copying Data

To copy the entire data table or graph, or part of the data, into the Clipboard or into another application such as Microsoft Excel or Word:

1. Click on the data window with the right mouse button and choose Select All, or, if your current view represents a table, click on the upper-left corner of the table (where the “No.” label is commonly displayed).
2. Click with the right mouse button on the window again and choose Copy, or click on the Copy button  on the PAS toolbar.
3. Run the application to which you want to copy data, position the cursor at the correct place, and then click the Paste button  on the application's toolbar or select Paste from the Edit menu.

7.1.3 Saving Data to a File

To save data to a file, click on the Save button , select a directory where you want your log file to be stored, select a database or type the name for a new database, and then click Save. To avoid confusion, do not store data files into the “Sites” directory where site databases are located.

7.1.4 Printing Reports

To print a data report to a printer, click on the print button  on the toolbar, select a printer and click OK. If you want to check how your document appears on the printed page, select Print Preview from the File menu.

7.1.5 Customizing Views

Date Order

To change the way PAS displays the date, select Options from the Tools menu, click on the Preferences tab, select the preferred date order, and then click OK.

Timestamp

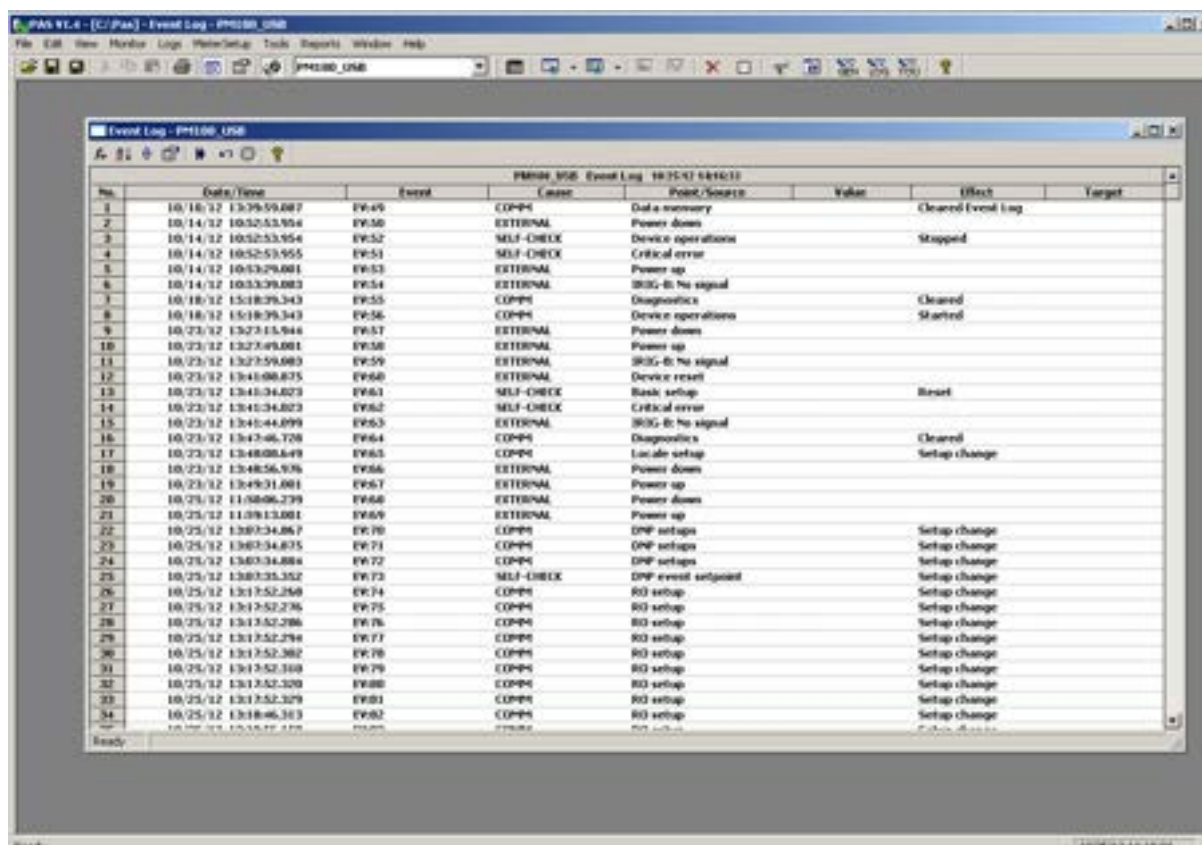
The timestamp is normally recorded and displayed on the screen at a 1-ms resolution. If you have an application that does not support this format, you may instruct PAS to drop the milliseconds. To change the way PAS records and displays the timestamp, select Options from the Tools menu, click on the Preferences tab, select the preferred timestamp format, and then click OK.

Voltage Disturbance Units

When programming a voltage disturbance trigger in your device, the operate limit for the trigger can be set either in a percent of the nominal voltage, or in voltage RMS units. To change the disturbance units, select Options from the Tools menu, click on the Preferences tab, select the preferred units, and then click OK.

7.2 Viewing the Event Log


Event log files are displayed in a tabular view, one event per row. PAS loads the entire database table to a window, so that you can scroll through the entire log to view its contents.



7.2.1 Selecting Primary and Secondary Units

Voltagages and currents can be displayed in primary or secondary units. To select units for your data views, click on the monitor window with the right mouse button, select Options, select the desired units for voltagages and currents, and then click OK.

7.2.2 Filtering and Sorting Events

You can use filtering to find and work with a subset of events that meet the criteria you specify. Click on the Filter button , or click on the report window with the right mouse button and select “Filter...”. Check the causes of events you want to display, and then click OK. PAS temporary hides rows you do not want displayed.

To change the default sorting order based on the date and time, click on the Sort button , or click on the report window with the right mouse button and select "Sort...", check the desired sort order, and then click OK.

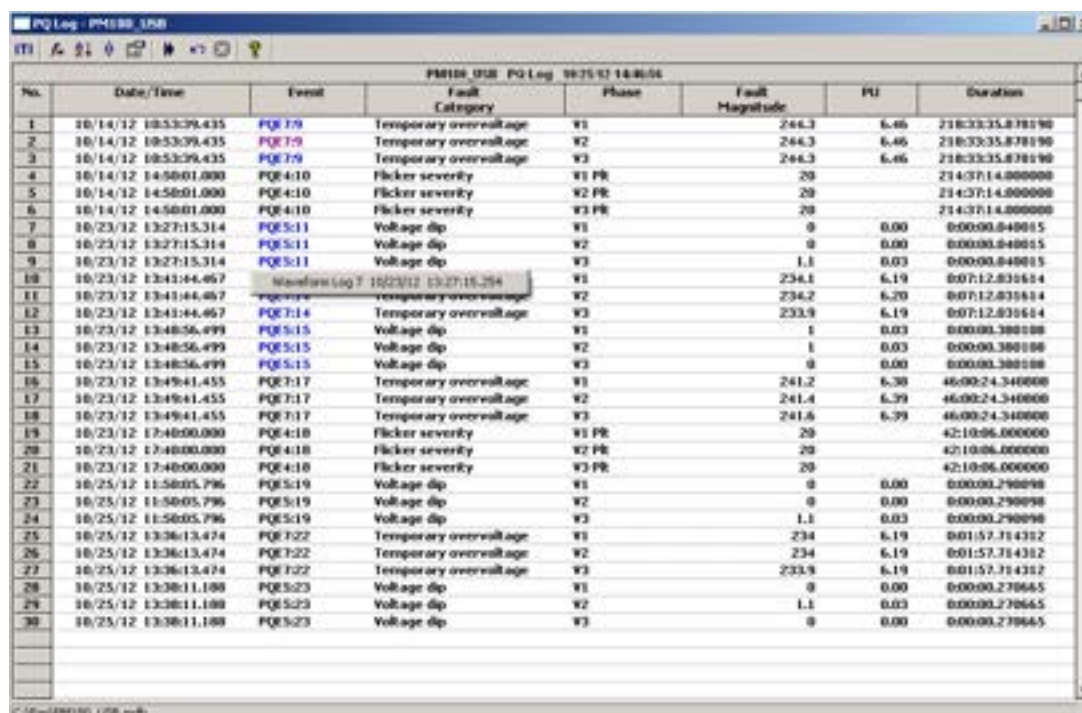
7.2.3 Linking to Waveforms and Data Records

If you programmed a setpoints to log setpoints operations to the Event log and the setpoints can trigger the Waveform or Data recorder, PAS automatically establishes links between the event and other database records where it finds a relationship with the event. Waveforms recorded at the time of the event are always linked to this event, even if the waveform was triggered by another source.

The event ID for which PAS finds related data is blue colored. Click on the colored event ID to check a list of the event links. Click on a list item to move to the related waveform or data log record.

7.3 Viewing the Power Quality Event Log

IEEE 1159 and EN 50160 PQ log files are displayed in a tabular view, one event per row. The IEEE 1159 PQ log normally contains both power quality and fault events. By default, the fault events are not displayed in the PQ report unless you enable them through the event filter (see below).




The screenshot shows a software window titled "PQ Log - PM100 USB". The window contains a table with the following columns: No., Date/Time, Event, Fault Category, Phase, Fault Magnitude, PU, and Duration. The table lists various power quality events such as temporary overvoltage, flicker severity, and voltage dips, categorized by phase (W1, W2, W3) and fault magnitude. A context menu is visible over the table, showing options like "Main Data Log?", "Engine", "Temporary overvoltage", "Flicker severity", "Voltage dip", and "Fault Category".


No.	Date/Time	Event	Fault Category	Phase	Fault Magnitude	PU	Duration
1	10/14/12 10:53:39.435	PQE7:9	Temporary overvoltage	W1	244.3	6.46	218:33:35.878190
2	10/14/12 10:53:39.435	PQE7:9	Temporary overvoltage	W2	244.3	6.46	218:33:35.878190
3	10/14/12 10:53:39.435	PQE7:9	Temporary overvoltage	W3	244.3	6.46	218:33:35.878190
4	10/14/12 14:50:01.000	PQE4:10	Flicker severity	W1 Ph	20		214:37:14.800000
5	10/14/12 14:50:01.000	PQE4:10	Flicker severity	W2 Ph	20		214:37:14.800000
6	10/14/12 14:50:01.000	PQE4:10	Flicker severity	W3 Ph	20		214:37:14.800000
7	10/23/12 13:27:15.314	PQE5:11	Voltage dip	W1	0	0.00	0:00:00.040015
8	10/23/12 13:27:15.314	PQE5:11	Voltage dip	W2	0	0.00	0:00:00.040015
9	10/23/12 13:27:15.314	PQE5:11	Voltage dip	W3	1.1	0.03	0:00:00.040015
10	10/23/12 13:43:44.467	Main Data Log?		W1	234.2	6.19	0:07:12.831614
11	10/23/12 13:43:44.467	Engine	Temporary overvoltage	W2	234.2	6.20	0:07:12.831614
12	10/23/12 13:43:44.467	PQE7:14	Temporary overvoltage	W3	233.9	6.19	0:07:12.831614
13	10/23/12 13:48:56.499	PQE5:15	Voltage dip	W1	1	0.03	0:00:00.380108
14	10/23/12 13:48:56.499	PQE5:15	Voltage dip	W2	1	0.03	0:00:00.380108
15	10/23/12 13:48:56.499	PQE5:15	Voltage dip	W3	0	0.00	0:00:00.380108
16	10/23/12 13:49:41.455	PQE7:17	Temporary overvoltage	W1	241.2	6.30	46:00:24.340000
17	10/23/12 13:49:41.455	PQE7:17	Temporary overvoltage	W2	241.4	6.39	46:00:24.340000
18	10/23/12 13:49:41.455	PQE7:17	Temporary overvoltage	W3	241.6	6.39	46:00:24.340000
19	10/23/12 17:40:00.000	PQE4:10	Flicker severity	W1 Ph	20		42:10:06.000000
20	10/23/12 17:40:00.000	PQE4:10	Flicker severity	W2 Ph	20		42:10:06.000000
21	10/23/12 17:40:00.000	PQE4:10	Flicker severity	W3 Ph	20		42:10:06.000000
22	10/25/12 11:50:05.796	PQE5:19	Voltage dip	W1	0	0.00	0:00:00.270098
23	10/25/12 11:50:05.796	PQE5:19	Voltage dip	W2	0	0.00	0:00:00.270098
24	10/25/12 11:50:05.796	PQE5:19	Voltage dip	W3	1.1	0.03	0:00:00.270098
25	10/25/12 13:36:13.474	PQE7:22	Temporary overvoltage	W1	234	6.19	0:01:57.714312
26	10/25/12 13:36:13.474	PQE7:22	Temporary overvoltage	W2	234	6.19	0:01:57.714312
27	10/25/12 13:36:13.474	PQE7:22	Temporary overvoltage	W3	233.9	6.19	0:01:57.714312
28	10/25/12 13:38:11.100	PQE5:23	Voltage dip	W1	0	0.00	0:00:00.270665
29	10/25/12 13:38:11.100	PQE5:23	Voltage dip	W2	1.1	0.03	0:00:00.270665
30	10/25/12 13:38:11.100	PQE5:23	Voltage dip	W3	0	0.00	0:00:00.270665

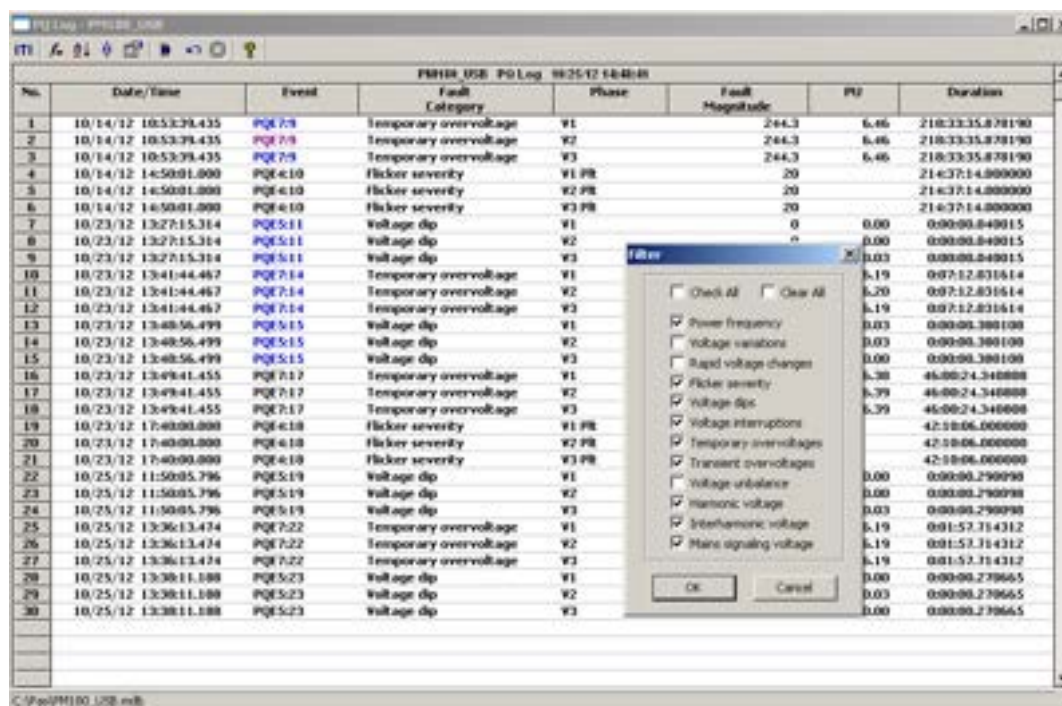
7.3.1 Selecting Primary and Secondary Units

Voltages and currents can be displayed in primary or secondary units. To select units for your report, click on the report window with the right mouse button, select Options, select the desired units for voltages and currents, and then click OK.

7.3.2 Filtering and Sorting Events

To filter events, click on the Filter button , or click on the report window with the right mouse button and select "Filter...", check the categories of events you want to display, and then click OK.

To change the default event sorting order, click on the Sort button , or click on the report window with the right mouse button and select "Sort...", check the desired sort order, and then click OK.



The screenshot shows the PQLog - POWER QUALITY software interface. The main window displays a table of power quality events. The table has columns for No., Date/Time, Event, Fault Category, Phase, Fault Magnitude, PQ, and Duration. The events are listed in a table with 30 rows. A filter dialog box is open over the table, showing a list of checkboxes for filtering events. The checkboxes are: Power frequency, Voltage variations, Rapid voltage changes, Flicker severity, Voltage dips, Voltage interruptions, Temporary overvoltages, Transient overvoltages, Voltage unbalance, Harmonic voltage, Interharmonic voltage, and Main signaling voltage. The 'Check All' and 'Clear All' buttons are at the top of the filter dialog. The 'OK' and 'Cancel' buttons are at the bottom.

No.	Date/Time	Event	Fault Category	Phase	Fault Magnitude	PQ	Duration
1	10/14/12 10:53:39.435	PQE 7:5	Temporary overvoltage	V1	244.3	6.46	218:33:35.878190
2	10/14/12 10:53:39.435	PQE 7:5	Temporary overvoltage	V2	244.3	6.46	218:33:35.878190
3	10/14/12 10:53:39.435	PQE 7:5	Temporary overvoltage	V3	244.3	6.46	218:33:35.878190
4	10/14/12 14:50:01.000	PQE 4:10	Flicker severity	V1 PB	20		214:37:14.000000
5	10/14/12 14:50:01.000	PQE 4:10	Flicker severity	V2 PB	20		214:37:14.000000
6	10/14/12 14:50:01.000	PQE 4:10	Flicker severity	V3 PB	20		214:37:14.000000
7	10/23/12 13:27:15.314	PQE 5:11	Voltage dip	V1	0	0.00	0:00:00.040015
8	10/23/12 13:27:15.314	PQE 5:11	Voltage dip	V2	0	0.00	0:00:00.040015
9	10/23/12 13:27:15.314	PQE 5:11	Voltage dip	V3	0.03	0.00	0:00:00.040015
10	10/23/12 13:41:44.467	PQE 7:14	Temporary overvoltage	V1		6.19	0:07:12.831614
11	10/23/12 13:41:44.467	PQE 7:14	Temporary overvoltage	V2		6.20	0:07:12.831614
12	10/23/12 13:41:44.467	PQE 7:14	Temporary overvoltage	V3		6.19	0:07:12.831614
13	10/23/12 13:48:56.499	PQE 5:15	Voltage dip	V1	0.03	0.00	0:00:00.380100
14	10/23/12 13:48:56.499	PQE 5:15	Voltage dip	V2	0.03	0.00	0:00:00.380100
15	10/23/12 13:48:56.499	PQE 5:15	Voltage dip	V3	0.00	0.00	0:00:00.380100
16	10/23/12 13:49:41.455	PQE 7:17	Temporary overvoltage	V1		6.38	46:00:24.340000
17	10/23/12 13:49:41.455	PQE 7:17	Temporary overvoltage	V2		6.39	46:00:24.340000
18	10/23/12 13:49:41.455	PQE 7:17	Temporary overvoltage	V3		6.39	46:00:24.340000
19	10/23/12 17:40:00.000	PQE 4:10	Flicker severity	V1 PB			42:58:06.000000
20	10/23/12 17:40:00.000	PQE 4:10	Flicker severity	V2 PB			42:58:06.000000
21	10/23/12 17:40:00.000	PQE 4:10	Flicker severity	V3 PB			42:58:06.000000
22	10/25/12 11:50:05.796	PQE 5:19	Voltage dip	V1	0.00	0.00	0:00:00.290090
23	10/25/12 11:50:05.796	PQE 5:19	Voltage dip	V2	0.00	0.00	0:00:00.290090
24	10/25/12 11:50:05.796	PQE 5:19	Voltage dip	V3	0.03	0.00	0:00:00.290090
25	10/25/12 13:36:13.474	PQE 7:22	Temporary overvoltage	V1		6.19	0:01:57.714312
26	10/25/12 13:36:13.474	PQE 7:22	Temporary overvoltage	V2		6.19	0:01:57.714312
27	10/25/12 13:36:13.474	PQE 7:22	Temporary overvoltage	V3		6.19	0:01:57.714312
28	10/25/12 13:38:11.100	PQE 5:23	Voltage dip	V1	0.00	0.00	0:00:00.270665
29	10/25/12 13:38:11.100	PQE 5:23	Voltage dip	V2	0.03	0.00	0:00:00.270665
30	10/25/12 13:38:11.100	PQE 5:23	Voltage dip	V3	0.00	0.00	0:00:00.270665

7.3.3 Linking to Waveforms and Data Records

PQ events for which PAS finds related links are blue colored. Click on the colored event ID to check a list of the event links. Click on a list item to move to the related waveform or data log records. Data log records associated with the event are taken into a separate window for easy viewing and trending.

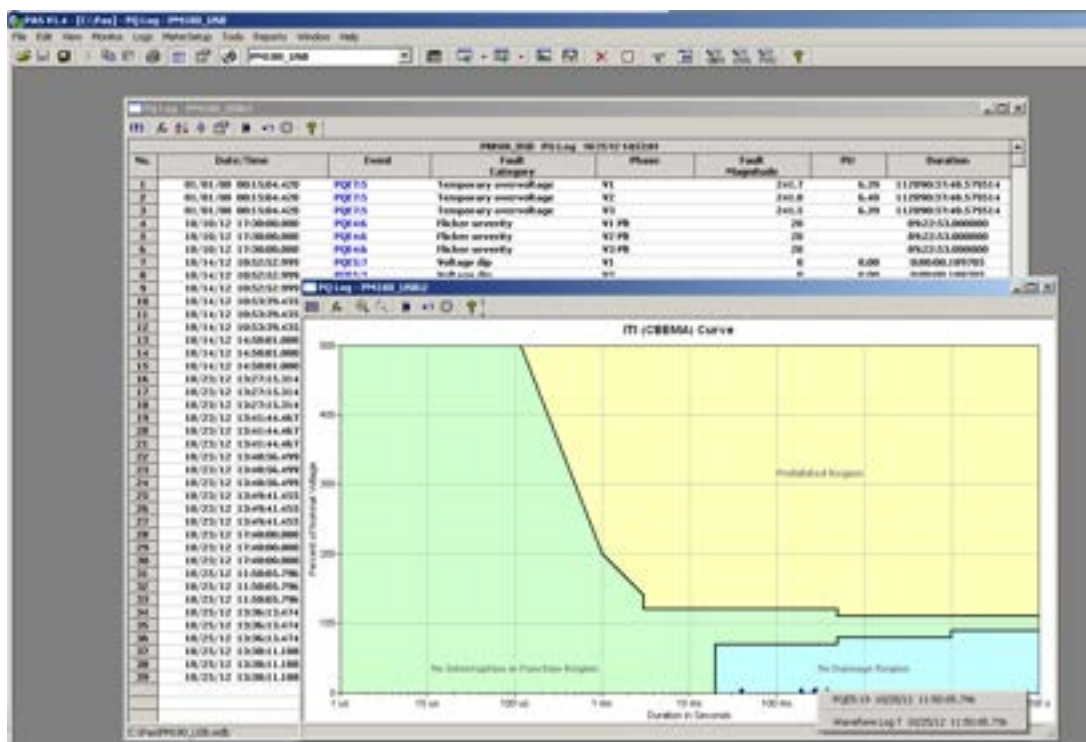
7.3.4 Retrieving Waveforms Online

If you programmed the PQ recorder to record waveforms on power quality events, you can upload the waveforms related to a specific event online if they have not yet been retrieved and stored to the database on your PC. Events for which PAS did not find a corresponding waveform in the database are still black colored. Click on the event ID, click on the “Retrieve Waveform” prompt, and then point to a database to which you want the waveform to be stored.

7.3.5 Viewing the ITI (CBEMA) Curve

Impulsive transients and short-duration voltage variations (sags and swells) can be viewed as magnitude/duration pairs on the ITIC (the Information Technology Industry Council, formerly CBEMA) curve chart. To view an ITI curve chart, click on the “ITI” button on the window toolbar.

To view the event details, click on the event point with the left mouse button. To directly move to the related power quality report entry or to a waveform record, click on the corresponding list item with the left mouse button.



7.4 Viewing EN50160 Compliance Report and Online statistics report

To get the EN50160 Compliance report, select "EN50160 Compliance Statistics" from the Reports menu, point to the database where you stored the retrieved statistics data, uncheck the voltage characteristics' tables you do not want to be reported, and then click Open.



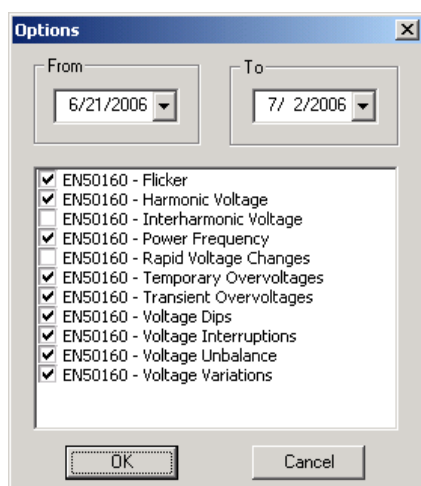
The example of EN50160 Compliance report see in the manual of corresponded meter.

The standard compliance statistics is reported within the selected time range.

For characteristics provided with definite limits, the report shows a percentage of the observation time within which the characteristic complied with the standard, e.g. 98% of the observations in selected time range.

For voltage characteristics provided with indicative values, the report gives statistical data classified by voltage magnitude and duration.

To change the time range or contents of the report, click on the report with the right mouse button, select "Options...", select the required time range, check the voltage characteristics to be included in the report, and then click OK.





If you retrieved the EN50160 online statistics data, you can view the online report on the last retrieved statistics in the same manner as the EN50160 Compliance statistics report. Select "EN50160 Online Statistics" from the Reports menu, point to the database where you stored the retrieved online statistics, uncheck the voltage characteristics' tables that you do not want to be reported, and then click Open.

7.5 Viewing the Data Log

Data log files can be displayed in a tabular view, one data record per row, or in a graphical view as a data trend graph.

7.5.1 Viewing Data Trend

To view data in a graphical form, click on the Data Trend  button on the local toolbar.

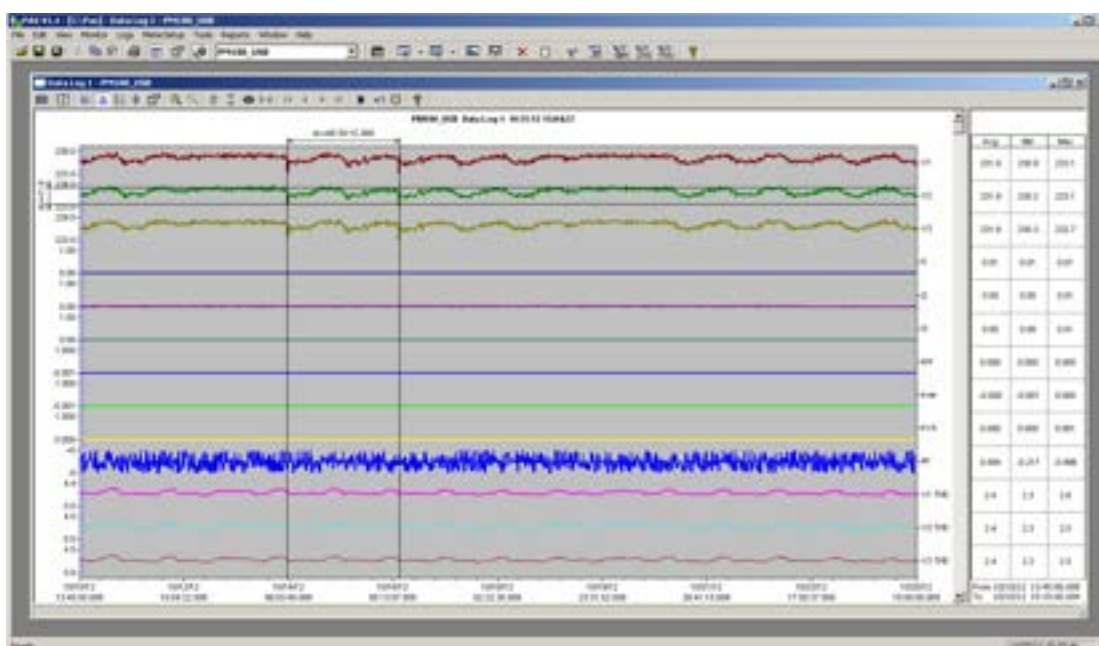
To change the time range for your graph, click on the Time Range button  on the local toolbar, and then select the desired date and time range.

7.5.2 Selecting Channels

To select desired data channels for your trend, click on the trend window with the right mouse button, select “Channels”, check the channels you want displayed, and then click OK.

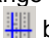
7.5.3 Customizing Line Colors and Styles

Trend lines for different channels can be shown in different colors using different line styles. To change the colors or line styles, click on the trend window with the right mouse button, select “Options...”, click on the “Display” tab, adjust colors and styles for channels, and then click OK. You can also change the colors for the background and gridlines.





7.5.4 Using the Marker Lines


The trend window has two blue dashed marker lines. The left marker indicates the starting position and the right marker indicates the end position for calculating the average and peak values.

To change the marker position, click on the trend window with the right mouse button, select Set Marker, or click on the  button on the window toolbar, and then click with left mouse button on the point where you want to put the marker. You can also drag both markers with the mouse, or use the right and left arrow keys on your keyboard to change the marker position (click on the trend pane with the mouse before using the keyboard, to allow the keyboard to receive your input).

7.5.5 Using a Zoom

You can use a horizontal and a vertical zoom to change size of your graph. Use the  buttons on your local toolbar representing green arrowheads to zoom in and zoom out. One click gives you a 100-percent horizontal zoom. Two buttons  representing magnifying glasses give you a proportional zoom in both directions.

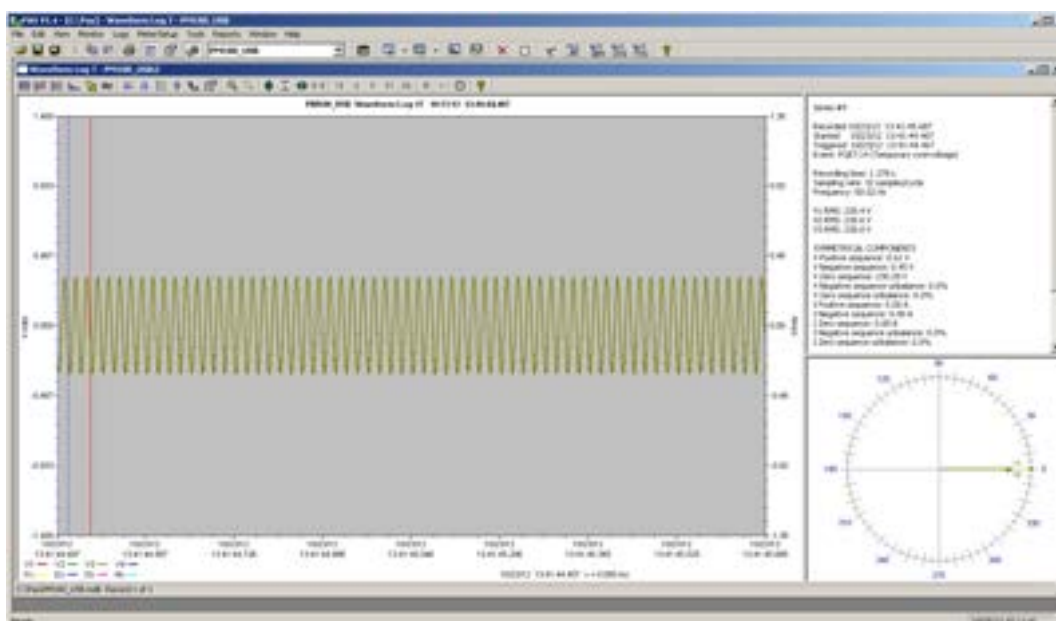
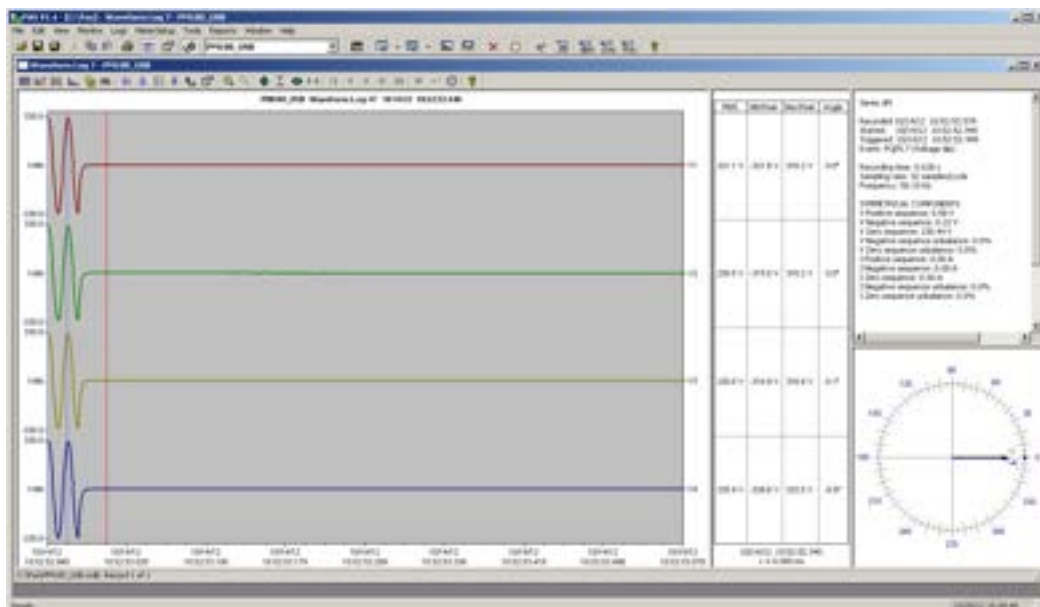
7.5.6 Delta Measurements

To measure the distance between two trend points, click on the Delta button , then click on the first point, and then click on the second point. The first reference point is still frozen until you close and reopen Delta, while the



second point can be placed anywhere within the trend line. You can measure a delta in both directions. To disable delta measurements, click on the Delta button once again.

7.6 Viewing Waveforms

Waveform data can be displayed in five different views. When you open a new file, PAS shows you a waveform graph showing non-overlapped waveforms. Each waveform window has a local toolbar from where you can open another window to examine the waveform in a different view.




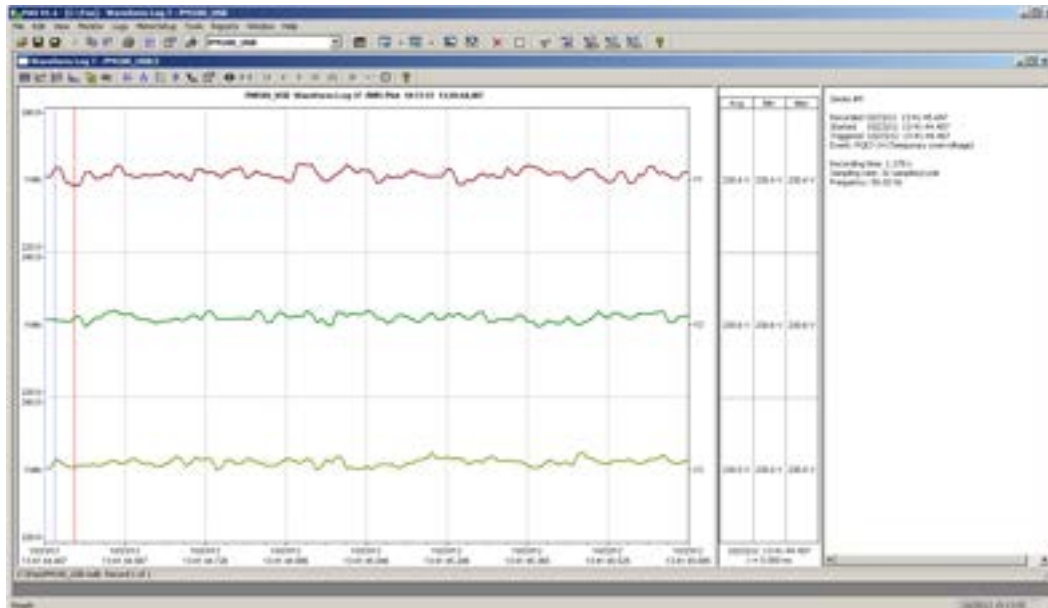
You can open all five views together to analyze different properties of the waveform like a wave shape, waveform disturbance, unbalance, or spectrum. When you move to another waveform record, all views are updated simultaneously to reflect the changes.

To view overlapped waveforms, click on the  button on the local toolbar; to view non-overlapped waveforms, click on the  button.

Waveform data is recorded in series that may contain many cycles of the sampled waveform. A waveform window displays up to 128 waveform cycles. If the waveform contains more cycles, the scroll bar appears under the waveform pane allowing you to scroll through the entire waveform.

7.6.1 Viewing an RMS Plot


PAS can show you a cycle-by-cycle RMS plot of the sampled AC waveforms. To open the RMS view, click on the  button. The graph shows the RMS points updated each half cycle.



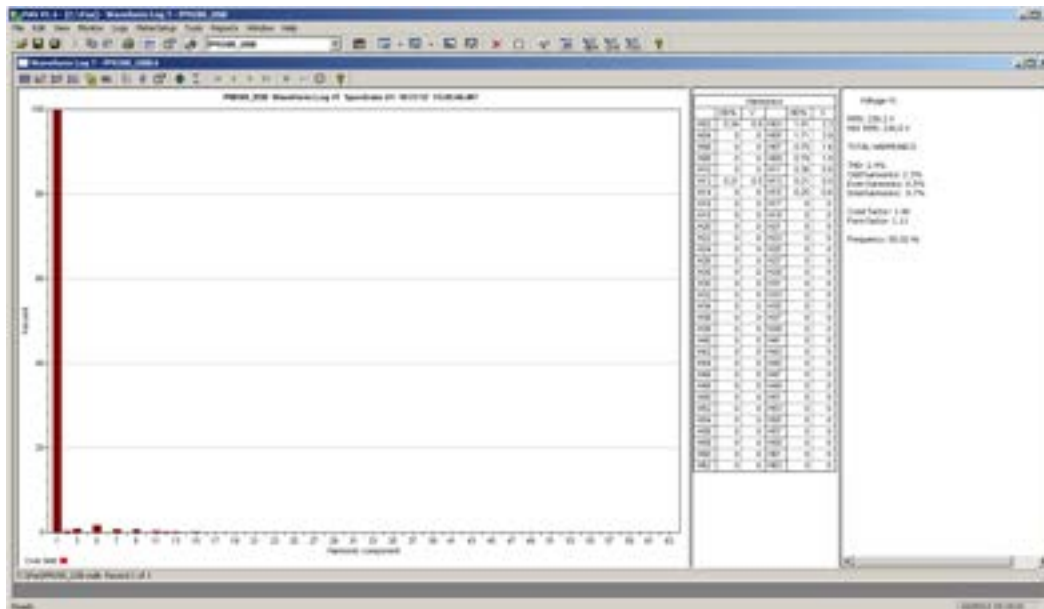
7.6.2 Viewing a Frequency Plot

To view a cycle-by-cycle frequency plot of the sampled voltage waveforms, click on the **Hz** button.

7.6.3 Viewing a Spectrum Chart

Click on the  button to view a spectrum chart for the selected waveform channel. To change a channel, click on the window with the right mouse button, select "Channels...", check the channel you want displayed, and then click OK. PAS provides voltage, current, active power and reactive power spectrum charts.

A spectrum is calculated over four cycles of the waveform beginning from the point where the left marker line is located in the open waveform view. If both waveform views are open, PAS gives the priority to the overlapped waveform view.



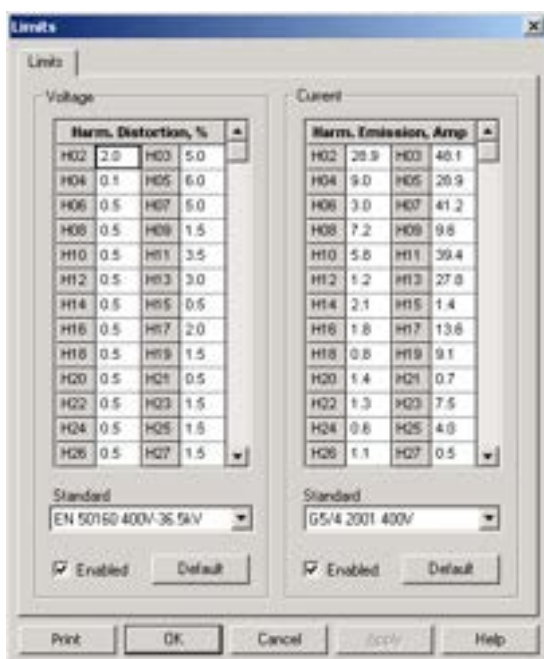
The order of the highest displayed harmonic component is equal to the half sampling rate at which the waveforms are sampled minus one. If the waveform was sampled at a rate of 256 samples per cycle, 63 harmonics are available. With 32 samples per cycle, only 15 harmonics are calculated, while others will be zeros.

PAS can give you indication on whether harmonic levels in the sampled waveforms exceed compliance limits defined by the power quality standards or local regulations.


To review or change harmonic limits:

1. Click on the spectrum window with the right mouse button and select "Limits..."
2. Select a harmonics standard, or select "Custom" and specify your own harmonic limits.
3. Check the Enabled box to visualize harmonic faults on the spectrum graph and in harmonic tables.

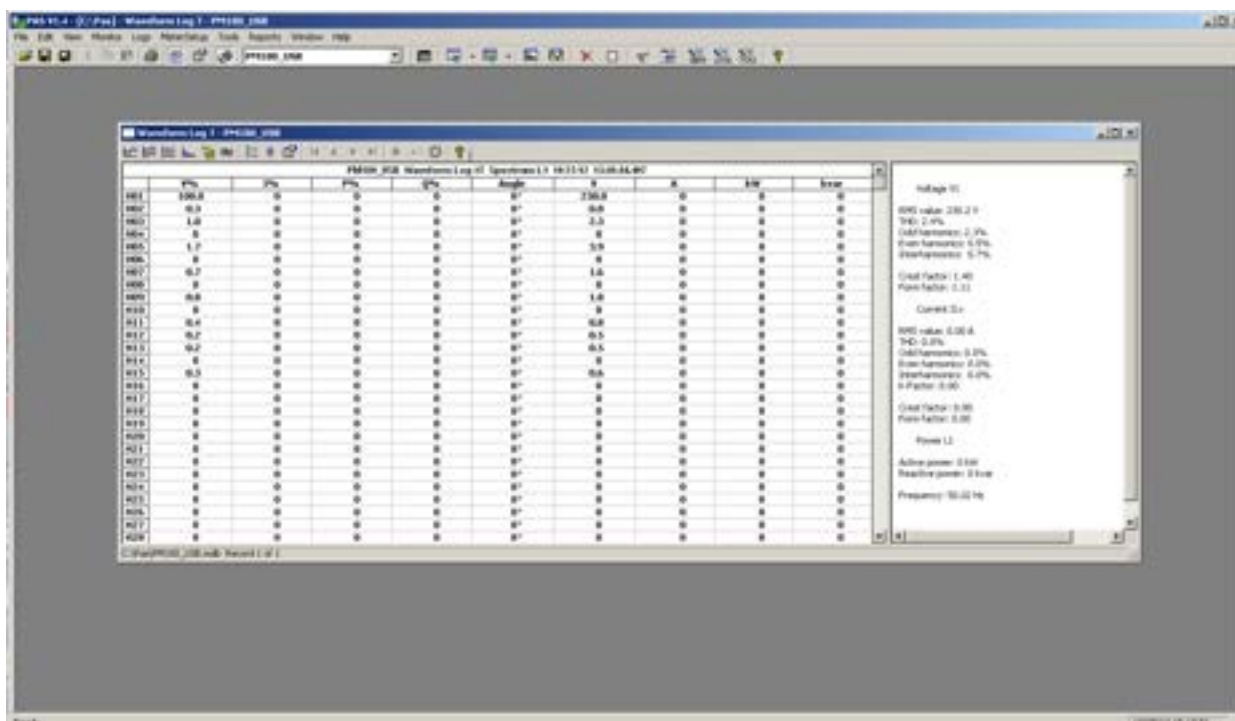
Harmonics that exceed selected compliance levels are colored in red on the graph and in the tables.



7.6.4 Viewing a Spectrum Table

Click on the  button on the local toolbar to display the harmonics spectrum in a tabular view for a selected phase or for all phases together.


The spectrum table shows voltage, current, active power and reactive power harmonic components both in percent of the fundamental and in natural units, and harmonic phase angles.



To change a phase, click on the window with the right mouse button, select “Options...”, check the phase you want displayed, and then click OK.

7.6.5 Waveform Options

Scrolling through Waveforms

The status bar at the bottom of the window shows you how many records the log file contains. Use green arrowheads  on the window toolbar to scroll through records.

Selecting Waveform Channels

A single waveform record may contain up to 56 waveforms including AC, VDC, digital and analog input channels, which can be displayed all together in a non-overlapped waveform view.



To select the channels you want to view on the screen, click on the waveform window with the right mouse button, select "Channels...", check the channels you want displayed, and then click OK.

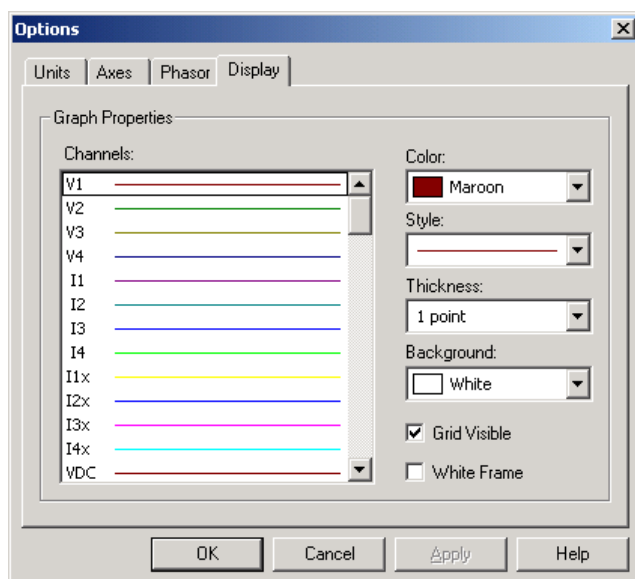
Checkboxes for channels that are not present in the waveform are dimmed.

Selecting the Time Axis

The horizontal axis can be displayed either in absolute time with date and time stamps, or in milliseconds relatively to the beginning of a waveform. To change the time units, click on the waveform window with the right mouse button, select "Options...", click on the "Axes" tab, select the desired units, and then click OK.

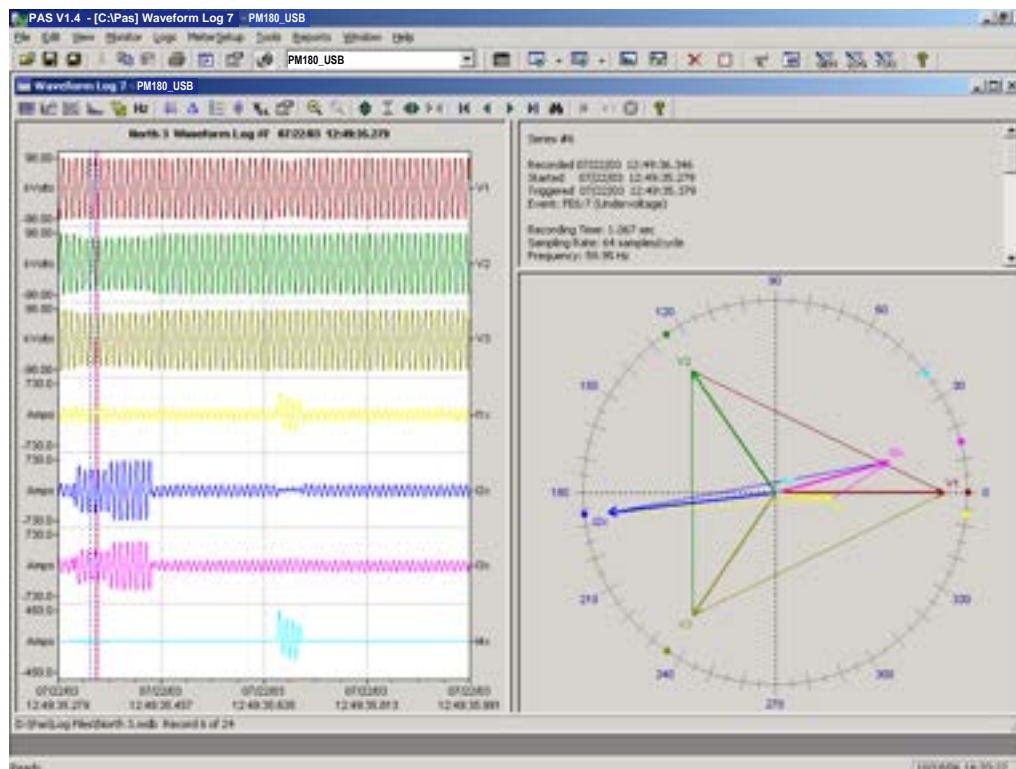
Customizing Line Colors and Styles

Channel waveforms are displayed using different colors and line styles. To change the colors or line styles, click on the waveform window with the right mouse button, select "Options...", click on the Display tab, adjust colors and styles, and then click OK. You can also change the waveform background and gridlines color.

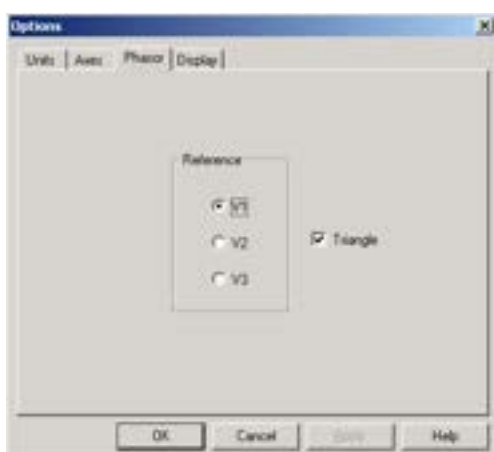


Viewing Phasor Diagrams

The phasor diagrams show you the relative magnitudes and angles of the three-phase voltage and current fundamental component. All angles are shown relative to the reference voltage channel.



To change the reference channel, click on the waveform window with the right mouse button, select "Options...", click on the "Phasor" tab, check the channel you want to make a reference channel, and then click "OK".



If you leave the Triangle box checked, PAS connects the ends of the voltage and current vectors showing you three-phase voltage and current triangles. This is useful when analyzing voltage and current unbalances.

Phasor diagrams are calculated over one waveform cycle pointed to by the left marker line. As you move the marker, the phasor diagrams are updated reflecting the new marker position.

Viewing Symmetrical Components


Waveform views have an additional pane at the right where PAS displays the symmetrical components for voltages and currents, calculated for the point indicated by the left marker line. To enable or disable the symmetrical components, click on the waveform window with the right mouse button, select "Options...", check or uncheck the "Symmetrical components" box on the "Channels" tab, and then click OK.

Selecting Primary and Secondary Units



Voltages and currents can be displayed in primary or secondary units. To select units for your waveforms, click on the waveform window with the right mouse button, select "Options...", select the desired units for voltages and currents on the Channels tab, and then click OK.

Using the Marker Lines

Waveform and RMS panes have two blue dashed marker lines. The left marker indicates the position from where data is taken to calculate the harmonics spectrum and phasor diagrams, and also as the starting position for calculating the RMS, average and peak values. The right marker indicates the end position for calculating the RMS, average and peak values. The minimum distance between the two markers is exactly one cycle.


To change the marker position, click on the  button, or click on the waveform window with the right mouse button and select Set Marker, and then click on the point where you want to put the marker. You can drag both markers with the mouse, or use the right and left arrow keys on your keyboard to change the marker position. Click on the waveform pane to allow the keyboard to get your input before using the keyboard.

Using a Zoom

You can use a horizontal and a vertical zoom to change size of your waveforms. Use the buttons  on your local toolbar representing green arrowheads to zoom in or out of the waveform graph. Every click on these buttons gives you a 100-percent horizontal or 50-percent vertical zoom. Two buttons  give you a proportional zoom in both directions.

When in the overlapped waveform view, you can zoom in on a selected waveform region. Click on the waveform window with the right mouse button, click 'Zoom', point onto one of the corners of the region you want to zoom in, press and hold the left mouse button, then point to another corner of the selected region and release the mouse button.


Delta Measurements

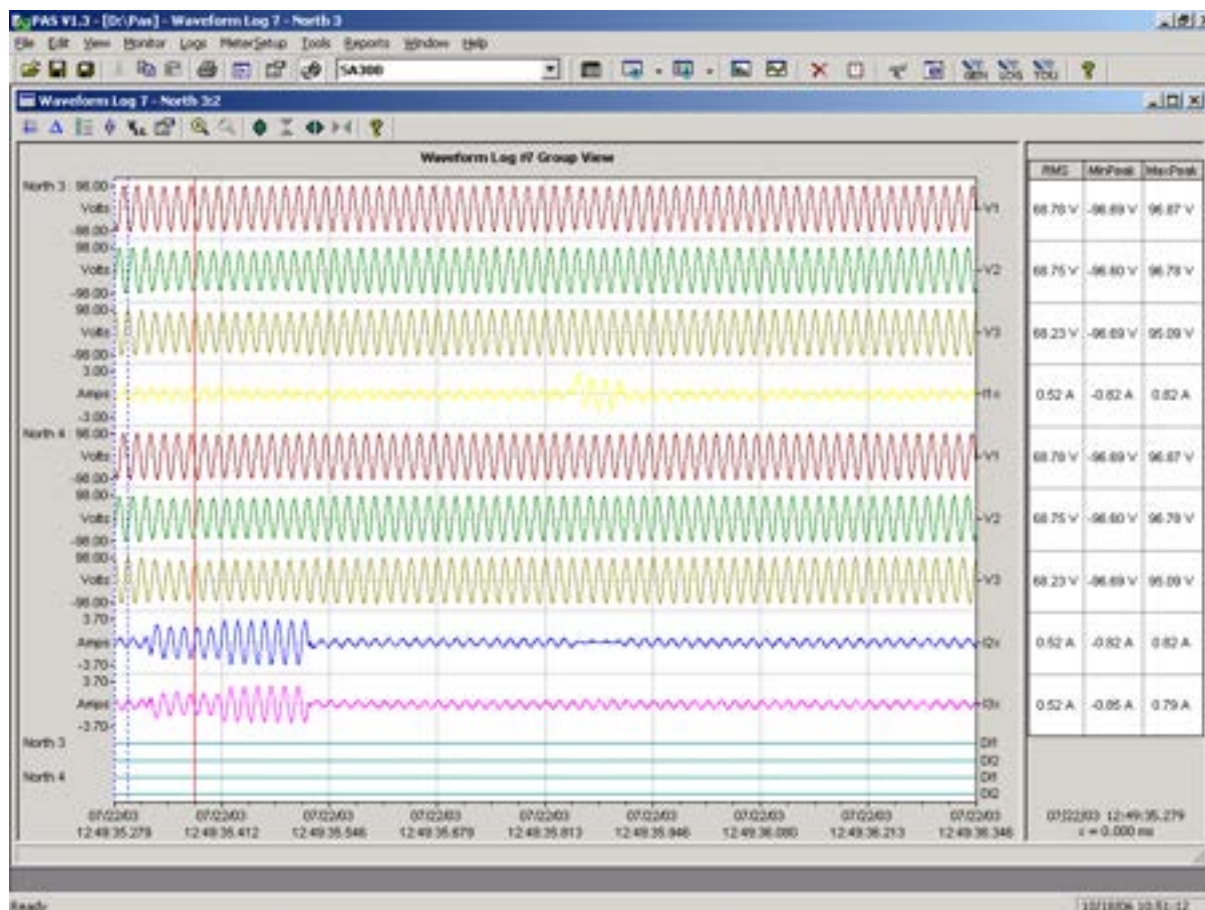
To measure the distance between two waveform points, click on the Delta button , then click on one point, and then click on the second point. The first reference point is still frozen until you close and reopen Delta, while the second point can be placed anywhere within the waveform line. You can measure a delta in both directions. To disable the Delta, click on the Delta button once again.

7.7 Viewing Synchronized Waveforms

If you have a number of devices with synchronized clocks, you can view waveforms recorded at different locations in one window. PAS can synchronize the time axes for different waveforms so they could be displayed in a single plot.

To get synchronized waveforms:

1. Put the databases with waveforms into the same folder, or put the sites from which you uploaded data to the same group in the sites tree.
2. Open a waveform you want to synchronize with other waveforms, and then click on the Multi-site View button . PAS searches for time-coordinated waveforms that have the same time span as your selected waveform.



3. Check the sites your want to see displayed.



4. Click on the "Channels" button and select channels for each site.
5. Click OK.

To change the channels, click on the waveform window with the right mouse button and select "Channels..."

7.8 Viewing additional logs and reports

Viewing in PAS some additional logs and reports: Fault Log, Sequence-of-Events Log, IEEE 1159 Statistics Report see in manual of corresponded meter..