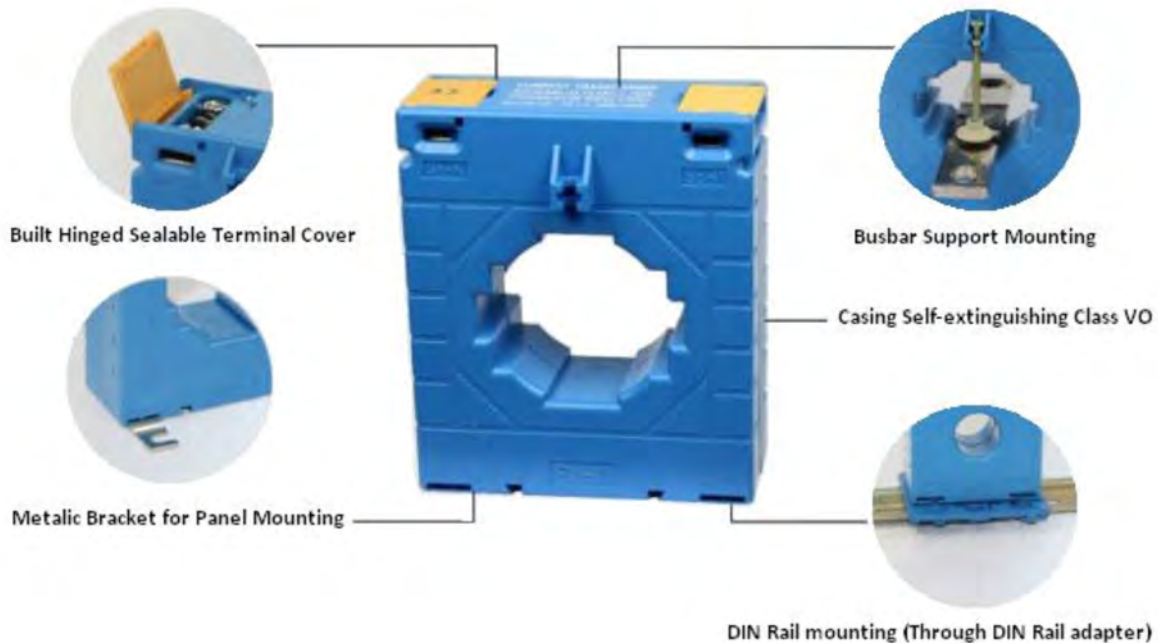


CT-MES SOLID CORE CURRENT TRANSFORMERS DATASHEET



A range of 8 frame sizes, compact in design, plastic case current transformers.

The footprint is much smaller than other models, fitted with integral hinged terminal covers.

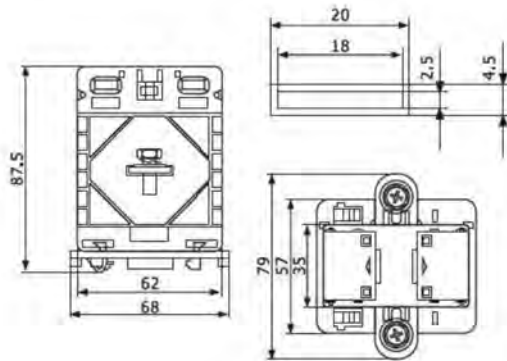
Mounting is via DIN rail mounting, foot Mounting or Busbar Mounting clips.



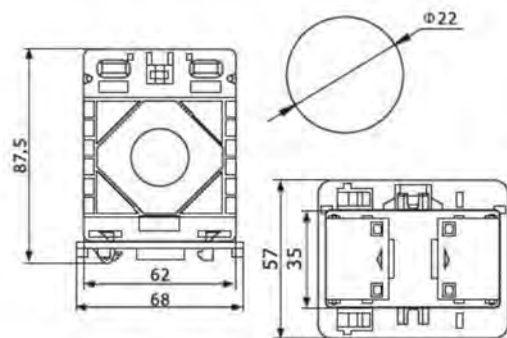
NATA certification on application.

HIGHLIGHTED FEATURES

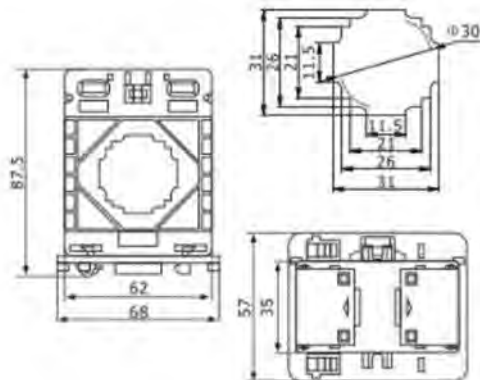
- ✚ Primary Current: 5A-3000A
- ✚ Secondary Current: 5A, 1A
- ✚ Standard Approval: VDE0414, BS7626, IEC60044-1, IEC61869.2, AS60044-1, AS61869.2
- ✚ Maximum Voltage: 0.72/3KV
- ✚ Frequency: 50-60Hz
- ✚ Rated load: 2.5VA, 5VA, 10VA, 15VA
- ✚ Class: 0.5, 1.0, 3.0 (*subject to burden VA*)
- ✚ Short time thermal current: $I_{th}=60 \times I_h$
- ✚ Rated security coefficient: $FS < 5$



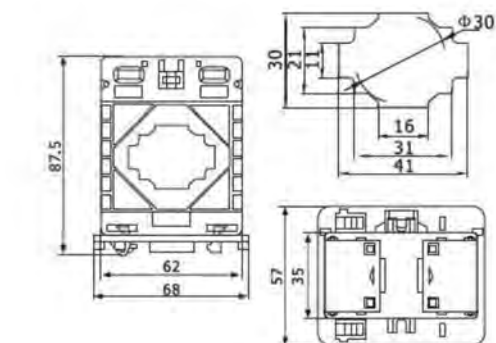
Type	Rated Current (A)	Rated Power (VA)		
		Class: 0.5	Class:1.0	Class:3.0
CT-MES-62/20B	5/5	1.5	2.5	-
	10/5	1.5	2.5	-
	15/5	1.5	2.5	-
	20/5	1.5	2.5	-
	25/5	1.5	2.5	-
	30/5	1.5	2.5	-
	40/5	1.5	2.5	-
	50/5	1.5	2.5	-
	60/5	1.5	2.5	-
	75/5	1.5	2.5	-
	100/5	1.5	2.5	-
	150/5	1.5	2.5	-



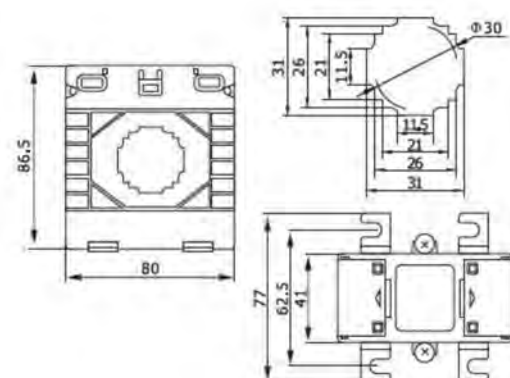
Type	Rated Current (A)	Rated Power (VA)		
		Class: 0.5	Class:1.0	Class:3.0
CT-MES-62/20	30/5	-	-	1.5
	40/5	-	-	1.5
	50/5	-	1.5	-
	60/5	-	2.5	-
	75/5	-	1.5	-
	80/5	-	2.5	-
	100/5	1.5	2.5	-
	150/5	2.5	3.75	-
	200/5	3.75	5	-



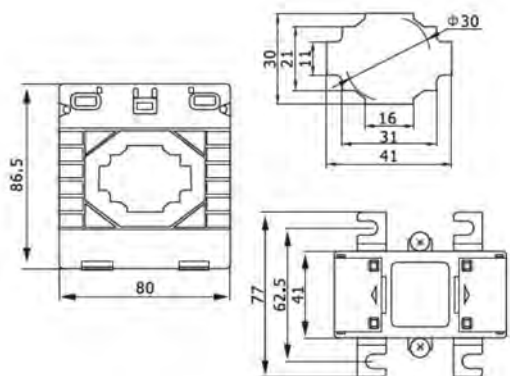
Type	Rated Current (A)	Rated Power (VA)		
		Class: 0.5	Class:1.0	Class:3.0
CT-MES-62/30	30/5	-	-	2.5
	40/5	-	-	2.5
	50/5	-	-	2.5
	60/5	-	1.5	-
	75/5	-	1.5	-
	100/5	1.5	2.5	-
	150/5	2.5	3.75	-
	200/5	3.75	5	-



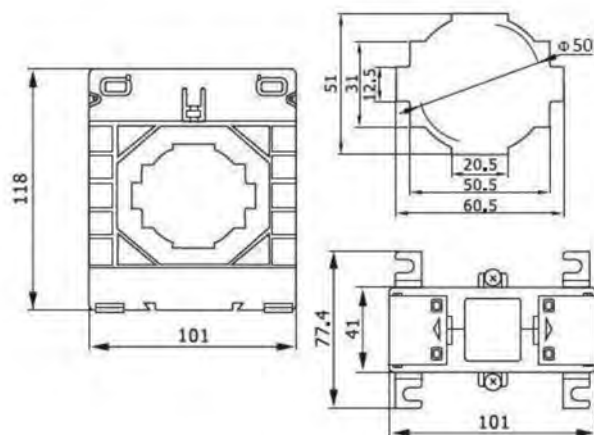
Type	Rated Current (A)	Rated Power (VA)		
		Class: 0.5	Class:1.0	Class: 3.0
CT-MES-62/40	60/5	-	1.5	-
	75/5	-	1.5	-
	100/5	-	1.5	-
	150/5	-	2.5	-
	200/5	2.5	3.75	-
	250/5	2.5	3.75	-
	300/5	3.75	5	-
	400/5	5	10	-



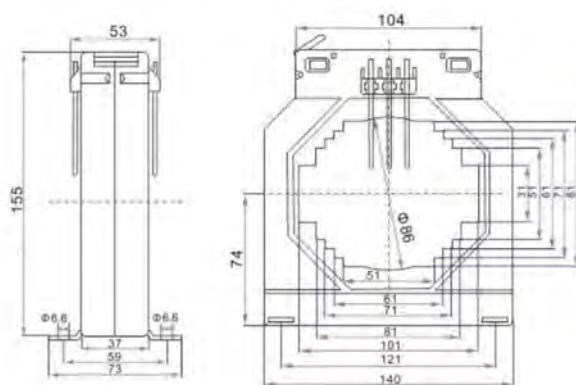
Type	Rated Current (A)	Rated Power (VA)		
		Class: 0.5	Class:1.0	Class: 3.0
CT-MES-80/30	30/5	-	-	2.5
	50/5	-	2.5	-
	60/5	-	2.5	-
	75/5	-	1.5	-
	100/5	-	2.5	-
	150/5	2.5	3.75	-
	200/5	5	5	-



Type	Rated Current (A)	Rated Power (VA)		
		Class: 0.5	Class:1.0	Class:3.0
CT-MES-80/40	100/5	-	2.5	-
	150/5	2.5	3.75	-
	200/5	3.75	5	-
	250/5	3.75	5	-
	300/5	5	5	-
	400/5	5	10	-
	500/5	5	10	-



Type	Rated Current (A)	Rated Power (VA)	
		Class: 0.5	Class:1.0
CT-MES-100/60	600/5	10	15
	800/5	10	15
	1000/5	10	20
	1200/5	15	20



Type	Rated Current (A)	Rated Power (VA)	
		Class: 0.5	Class:1.0
CT-MES-140/100	800/5	15	20
	1000/5	15	20
	1200/5	15	20
	1500/5	15	20
	1600/5	15	20
	2000/5	15	25
	2500/5	15	25
	3000/5	15	25



CONTACT SATEC (AUSTRALIA) PTY LTD

Phone: +61 2 4774 2959

Email: sales@satec-global.com.au

Website: satec-global.com.au