




High Accuracy Current Sensors

| ORDER STRING (Catalog no.) | CS05S / RS5 (HX0140) | CS1 (EL0072) | CS1L (EL0115) | CS1S (HX0118) |
|-------------------------------|---|---|--|---|
| |  |  |  |  |
| MAX CURRENT | 20A | 100A | 100A | 100A |
| WINDOW | Ø 16mm 0.62" | Ø 12mm 0.47" | Ø 23mm 0.9" | Ø 16mm 0.63" |
| CORE | Split | Solid | Solid | Split |
| ACCURACY [%] | 0.5 | 0.1 | 0.1 | 0.5 |
| WEIGHT | 98.2g 0.22 lbs | 156.4g 0.34 lbs | 206.3g 0.45 lbs | 103.4g 0.23 lbs |

| ORDER STRING (Catalog no.) | CS1H (HX0161) | CS2 (EL0142) | CS2S (HX0145) | CS2SL (HX0156) |
|-------------------------------|---|---|--|---|
| |  |  |  |  |
| MAX CURRENT | 100A | 200A | 200A | 200A |
| WINDOW | Ø 13mm 0.05" | Ø 23mm Ø 0.9" | 24.5x23.1mm 0.96x0.9" | 43x33mm 1.69x1.3" |
| CORE | Split | Solid | Split | Split |
| ACCURACY [%] | 0.1/0.2 | 0.1 | 0.5 | 0.5 |
| WEIGHT | 280g 0.6lbs | 206.3g 0.45 lbs | 160g 0.34lbs | 450g 1lbs |

| ORDER STRING (Catalog no.) | CS4 (EL0117) | CS4S (HX0157) | CS8 (EL0125) | CS8S (HX0158) |
|-------------------------------|---|---|--|---|
| |  |  |  |  |
| MAX CURRENT | 400A | 400A | 800A | 800A |
| WINDOW | Ø 26mm 1.02" | 43x33mm 1.69x1.3" | 100x32/62mm 4x1.28/2.44" | 80x50mm 3.1x1.9" |
| CORE | Solid | Split | Solid | Split |
| ACCURACY [%] | 0.1 | 0.5 | 0.1 | 0.5 |
| WEIGHT | 214g 0.47lbs | 450g 1lbs | 525g 1.16lbs | 900g 1.9lbs |

| ORDER STRING (Catalog no.) | CS12S (HX0153) | CS20S (HX0154) | CS30S (HX0155) |
|-------------------------------|---|--|---|
| |  |  |  |
| MAX CURRENT | 1200A | 2000A | 3000A |
| WINDOW | 120x80mm 4.7x3.1" | 160x80mm 6.3x3.15" | 160x80mm 6.3x3.15" |
| CORE | Split | Split | Split |
| ACCURACY [%] | 0.5 | 0.5 | 0.5 |
| WEIGHT | 1.25kg 2.75lbs | 4.3kg 9.4lbs | 4.3kg 9.4lbs |

Technical Specifications

| | |
|----------------------------|----------------------------------|
| Frequency | 50/60Hz |
| Lead Insulation | 600V AC |
| Core Insulation | 4000V AC |
| Nominal Current | 50% of maximum current |
| Lead Length | 2.5m / 8.2ft (UL1015) |
| Operating Temperature | -40°C to +70°C |
| Storage Temperature | -40°C to +85°C |
| Material | All materials are UL approved |
| Standard | IEC 60044-1 |
| Burden | 0.2 VA |
| Thermal over current limit | $40 \times I_{MAX}$ for 1 second |
| Short circuit over current | $80 \times I_{MAX}$ for 10 ms |

Installation Recommendations

All HACS include a built-in automatic protection circuit for maximum safety, eliminating the need to use shorting bars.

All HACS are supplied with 8ft / 2.5m cable.

Maximum cable length: 650ft / 200m.

Recommended wire gauge: $\geq 1.5 \text{ mm}^2$

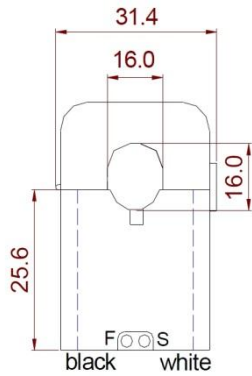
It is recommended to use a shielded extension cable to connect between the HACS and the SATEC meter. The cable shield must be connected to the SATEC meter ground.

It is recommended to locate HACS cable in separate cable conduit and at least 1m (3ft) away from High Voltage circuits, and/or other high power magnetic fields.

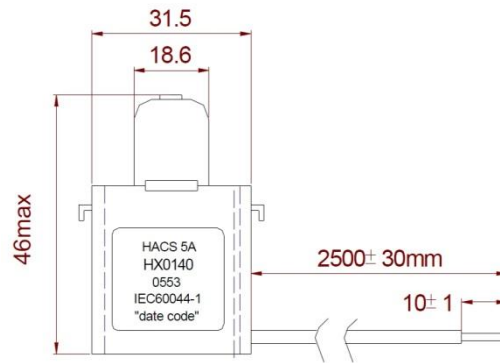
CT Dimensions

Order String

**CS05S / RS5
(HX0140)**

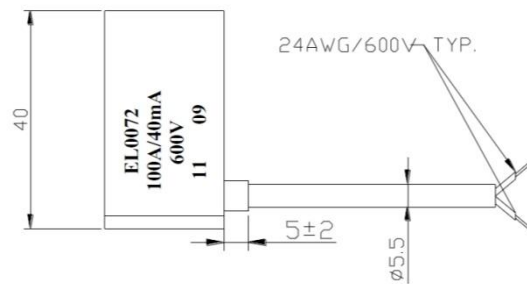
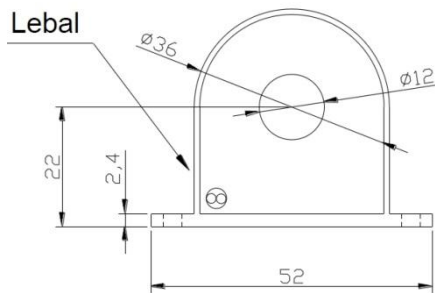


Front view

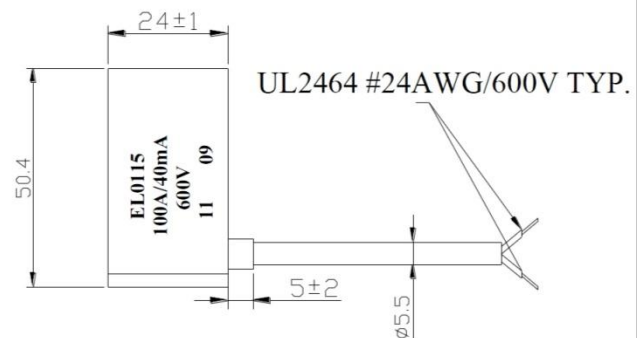
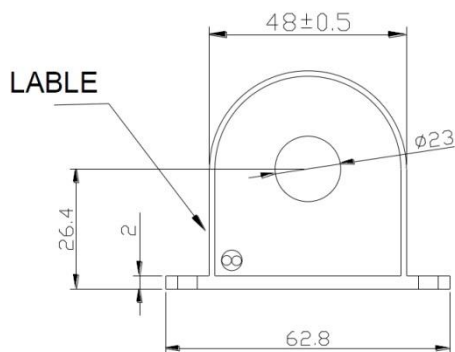


Left view

**CS1
(EL0072)**

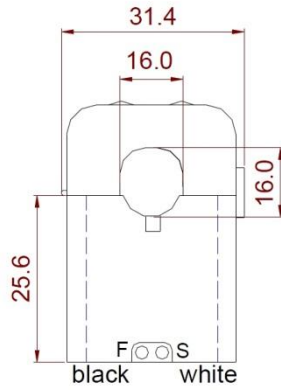


**CS1L
(EL0115)**

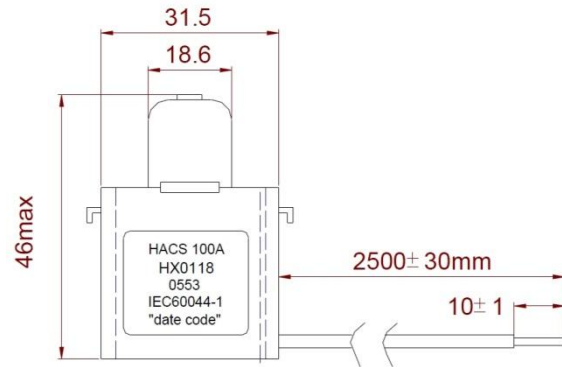


Order String

**CS1S
(HX0118)**

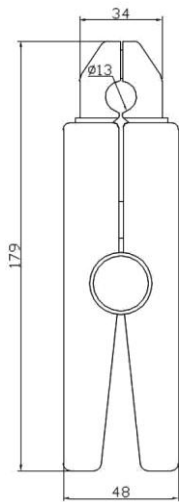


Front view

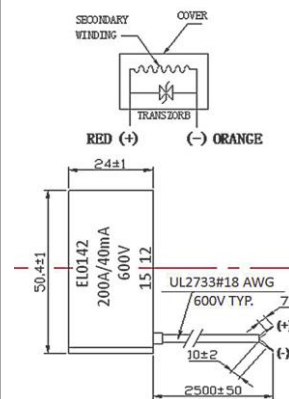
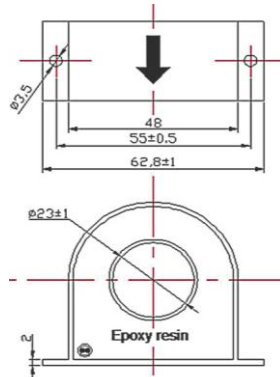


Left view

**CS1H
(HX0161)**

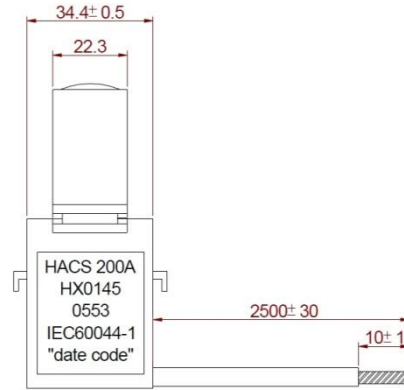
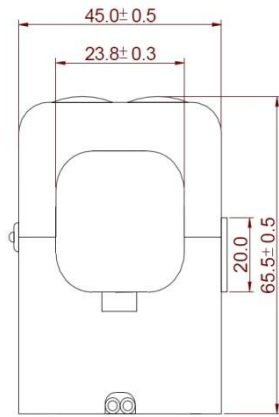


**CS2
(EL0142)**



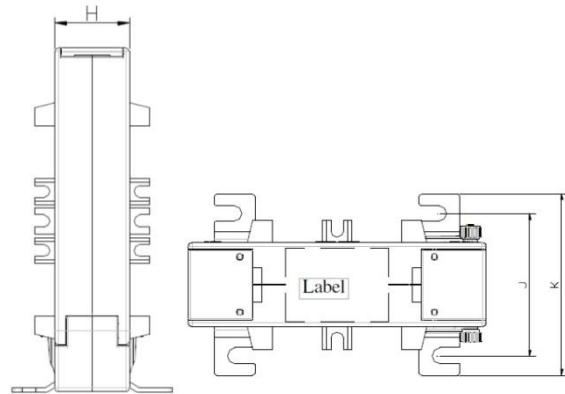
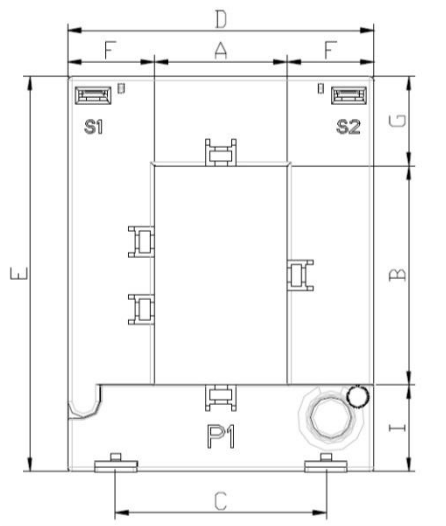
Order String

**CS2S
(HX0145)**



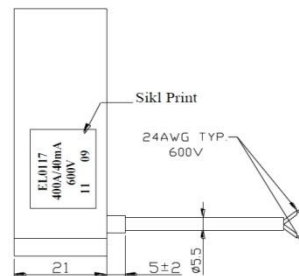
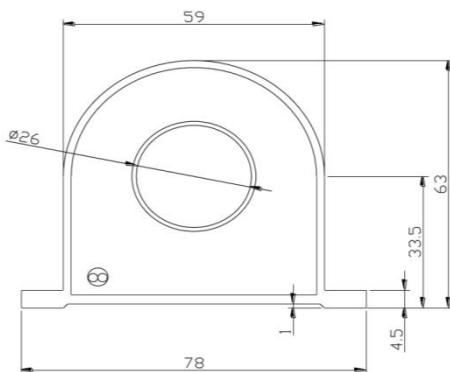
UL1015 22AWG PVC WIRE(600V)

**CS2SL
(HX0156)**



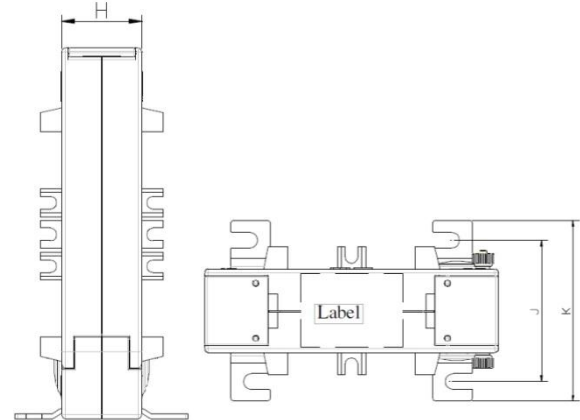
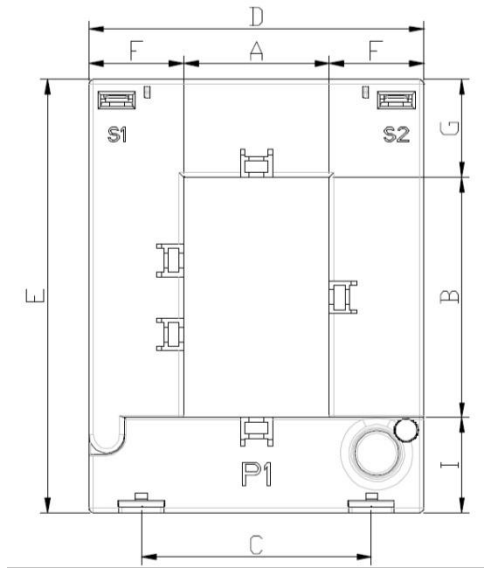
| A | B | C | D | E | F | G | H | I | J | K |
|----|----|----|----|-----|------|----|----|----|----|----|
| 33 | 43 | 45 | 92 | 100 | 29.5 | 30 | 28 | 27 | 50 | 65 |

**CS4
(EL0117)**



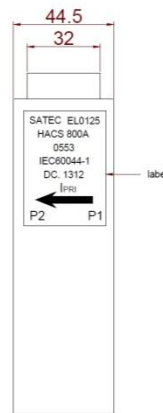
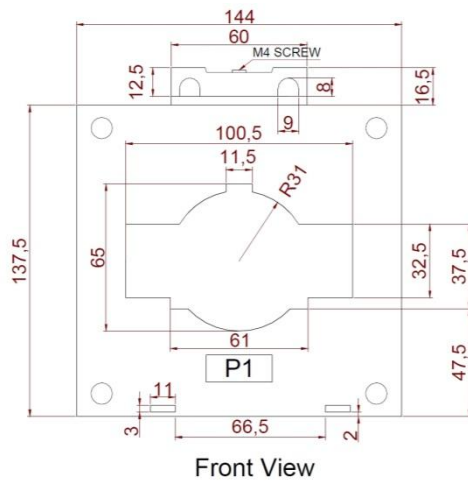
Order String

**CS4S
(HX0157)**



| A | B | C | D | E | F | G | H | I | J | K |
|----|----|----|----|-----|------|----|----|----|----|----|
| 33 | 43 | 45 | 92 | 100 | 29.5 | 30 | 28 | 27 | 50 | 65 |

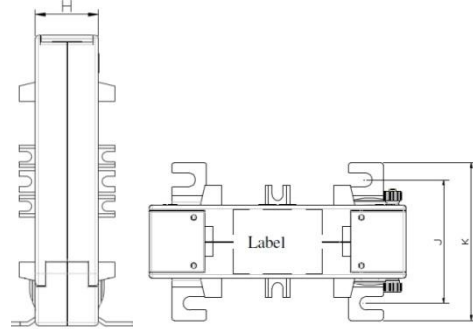
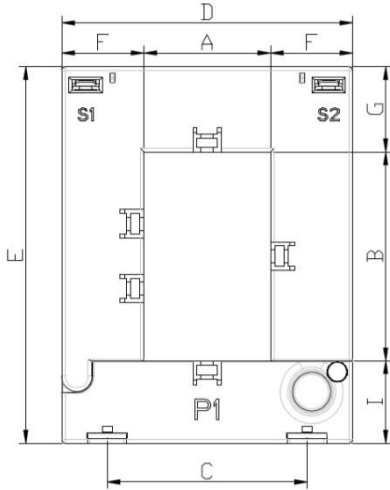
**CS8
(EL0125)**



Left View

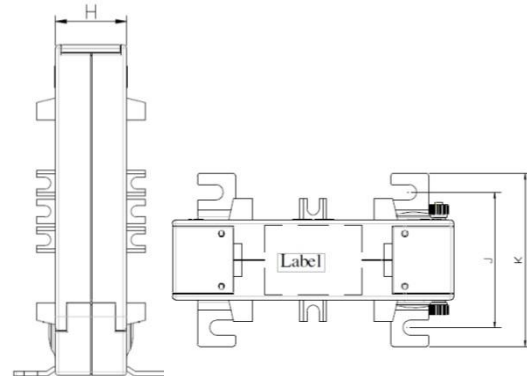
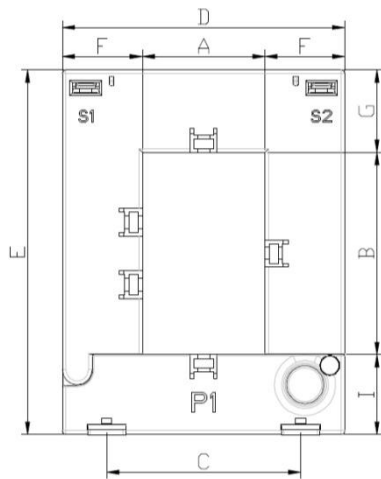
Order String

**CS8S
(HX0158)**



| A | B | C | D | E | F | G | H | I | J | K |
|----|----|----|-----|-----|----|----|----|----|------|------|
| 50 | 80 | 78 | 114 | 145 | 32 | 32 | 32 | 33 | 52.5 | 67.5 |

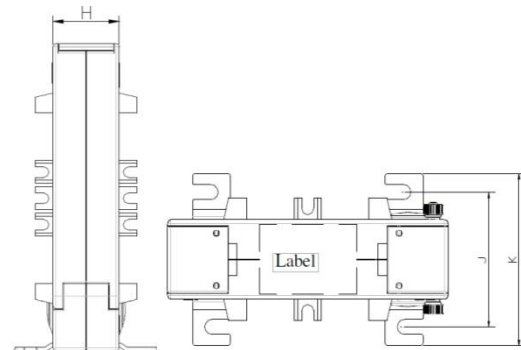
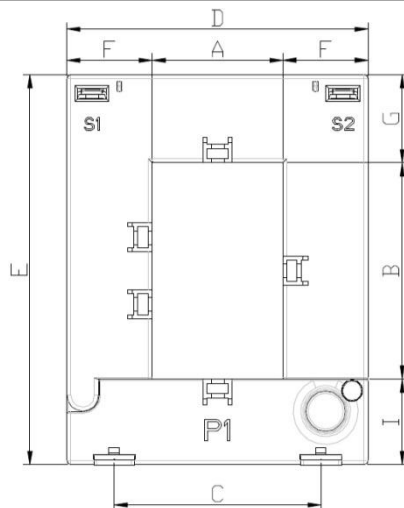
**CS12S
(HX0153)**



| A | B | C | D | E | F | G | H | I | J | K |
|----|-----|-----|-----|-----|----|----|----|----|------|------|
| 80 | 120 | 108 | 144 | 185 | 32 | 32 | 32 | 33 | 52.5 | 67.5 |

**CS20S
(HX0154)**

**CS30S
(HX0155)**



| A | B | C | D | E | F | G | H | I | J | K |
|----|-----|-----|-----|-----|----|----|----|----|----|----|
| 80 | 160 | 120 | 184 | 245 | 52 | 47 | 52 | 38 | 61 | 76 |